

Student Questionnaire – v2

Please answer the questions using the following scores 1-7:

- 1 - Completely agree / Very Good
- 2 - Strongly Agree / Good
- 3 - Agree / Reasonable
- 4 - Disagree / Weak
- 5 - Strongly disagree / Poor
- 6 - Completely disagree / Very Poor
- 7 - no opinion

A. LEARNING:

- 1. You found this module intellectually challenging and stimulating..... 1 ☐ 2 ☐ 3 ☐ 4 ☐ 5 ☐ 6 ☐ 7 ☐
- 2. You have learned something that you consider valuable 1 ☐ 2 ☐ 3 ☐ 4 ☐ 5 ☐ 6 ☐ 7 ☐
- 3. Your interest in the subject has increased as a consequence of this module 1 ☐ 2 ☐ 3 ☐ 4 ☐ 5 ☐ 6 ☐ 7 ☐
- 4. You have learned and understood the subject materials in this module 1 ☐ 2 ☐ 3 ☐ 4 ☐ 5 ☐ 6 ☐ 7 ☐

C. ORGANIZATION:

- 1 Instructor's explanations are clear..... 1 ☐ 2 ☐ 3 ☐ 4 ☐ 5 ☐ 6 ☐ 7 ☐
- 2 materials are well prepared and clear 1 ☐ 2 ☐ 3 ☐ 4 ☐ 5 ☐ 6 ☐ 7 ☐
- 3 The module objectives are clearly stated and pursued 1 ☐ 2 ☐ 3 ☐ 4 ☐ 5 ☐ 6 ☐ 7 ☐
- 4 Lectures facilitate taking notes. 1 ☐ 2 ☐ 3 ☐ 4 ☐ 5 ☐ 6 ☐ 7 ☐

D. GROUP INTERACTION

- 1 Students are encouraged to participate in class discussions 1 ☐ 2 ☐ 3 ☐ 4 ☐ 5 ☐ 6 ☐ 7 ☐
- 2 Students are invited to share their ideas and knowledge 1 ☐ 2 ☐ 3 ☐ 4 ☐ 5 ☐ 6 ☐ 7 ☐
- 3 Students are encouraged to ask questions and are given meaningful answers. 1 ☐ 2 ☐ 3 ☐ 4 ☐ 5 ☐ 6 ☐ 7 ☐
- 4 Students are encouraged to express their own ideas and/or question the instructor 1 ☐ 2 ☐ 3 ☐ 4 ☐ 5 ☐ 6 ☐ 7 ☐

F. BREADTH:

- 1 Instructor contrasts the implications of various theories..... 1 ☐ 2 ☐ 3 ☐ 4 ☐ 5 ☐ 6 ☐ 7 ☐
- 2 Instructor presents the background or origin of ideas/concepts developed in class 1 ☐ 2 ☐ 3 ☐ 4 ☐ 5 ☐ 6 ☐ 7 ☐
- 3 Instructor presents points of view other than his/her own when appropriate..... 1 ☐ 2 ☐ 3 ☐ 4 ☐ 5 ☐ 6 ☐ 7 ☐
- 4 Instructor adequately discusses current developments in field. 1 ☐ 2 ☐ 3 ☐ 4 ☐ 5 ☐ 6 ☐ 7 ☐

G. EXAMINATIONS:

- 1 Feedback on examinations/graded materials is valuable..... 1 ☐ 2 ☐ 3 ☐ 4 ☐ 5 ☐ 6 ☐ 7 ☐
- 2 Methods of evaluating student work are fair and appropriate..... 1 ☐ 2 ☐ 3 ☐ 4 ☐ 5 ☐ 6 ☐ 7 ☐
- 3 Examinations/graded materials test module content as emphasized by instructor. 1 ☐ 2 ☐ 3 ☐ 4 ☐ 5 ☐ 6 ☐ 7 ☐

H. ASSIGNMENTS:

- 1 Required readings/texts are valuable 1 ☐ 2 ☐ 3 ☐ 4 ☐ 5 ☐ 6 ☐ 7 ☐
- 2 Readings, homeworks, etc., contribute to appreciation and understanding of the subject..... 1 ☐ 2 ☐ 3 ☐ 4 ☐ 5 ☐ 6 ☐ 7 ☐

Do you have any comments to add about the module?

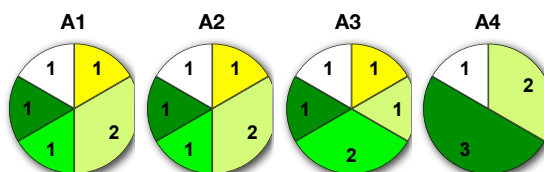
(OPEN QUESTION)

J. STUDENT AND MODULE CHARACTERISTICS:

- 1 Module difficulty, relative to other modules, is: very easy ☐ easy ☐ medium ☐ hard ☐ very hard ☐
- 2 Module workload, relative to other modules, is: very light ☐ light ☐ medium ☐ heavy ☐ very heavy ☐
- 3 Module pace, relative to other modules, is: too slow ☐ slow ☐ about right ☐ fast ☐ too fast ☐
- 4 Hours per week required outside of class: <10 ☐ 10-20 ☐ 20-30 ☐ 30-40 ☐ >40 ☐
- 5 Your expected grade in the module: A ☐ B ☐ C ☐ D ☐ E ☐ F ☐
- 6 How many modules did you take before this one? <5 ☐ 5-10 ☐ 10-20 ☐ 20-30 ☐ >30 ☐

AM0102 - Water - Sampling and General Characterization.

A: LEARNING



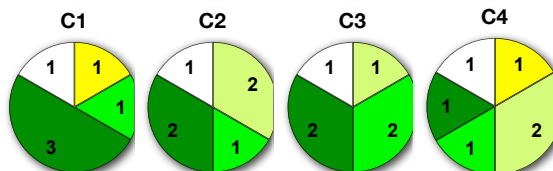
Module:

AM0102

Ac. Year

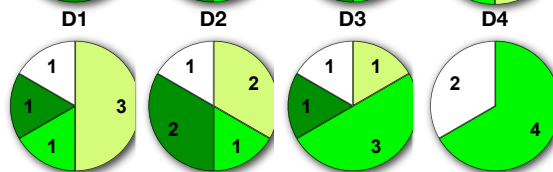
2012/2013

C: ORGANIZATION



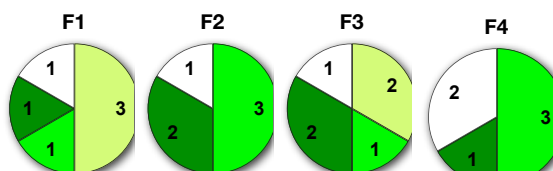
no. of students in study plan:	4
no. of evaluated students:	6
no. of questionnaires delivered:	6

D: GROUP INTERACTION

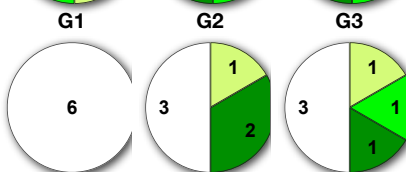


STUDENT COMMENTS

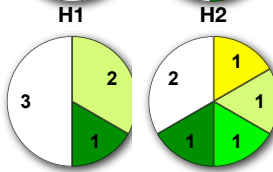
F: BREADTH



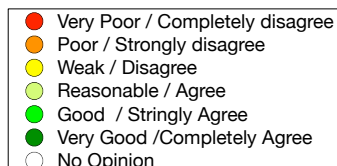
G: EXAMINATIONS



H: ASSIGNMENTS



I: OVERALL



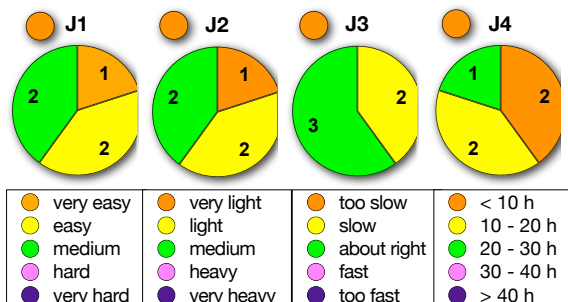
J: Infrastructures



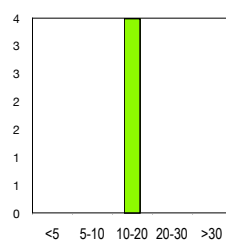
K: Student Performance



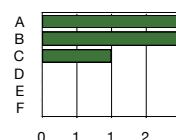
J: STUDENT AND MODULE CHARACTERISTICS



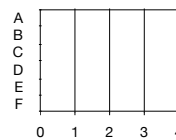
J8 - previous modules



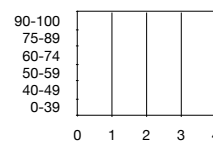
J7 - Expected Grades



Student Grades



Student Grades



AM0104 - Water - Metal Analysis.

A: LEARNING



C: ORGANIZATION



D: GROUP INTERACTION



F: BREADTH



G: EXAMINATIONS



H: ASSIGNMENTS



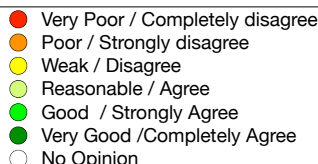
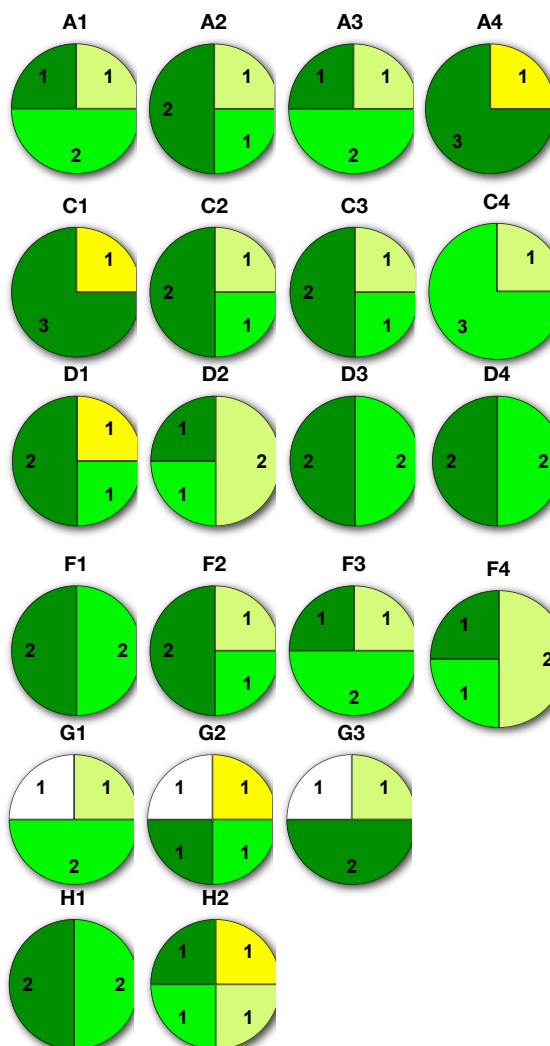
I: OVERALL



J: Infrastructures



K: Student Performance



Module:
Ac. Year

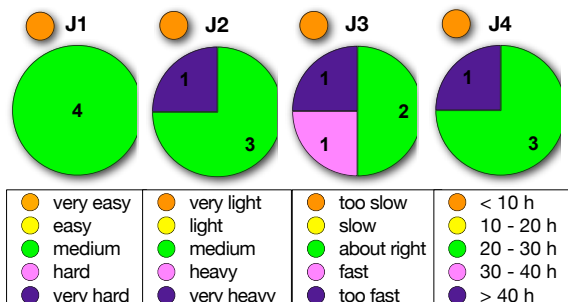
AM0104
2012/2013

no. of students in study plan:	4
no. of evaluated students:	5
no. of questionnaires delivered:	5

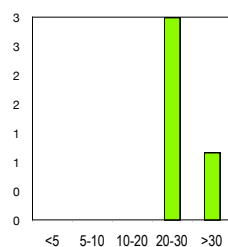
STUDENT COMMENTS

First, I don't know why there are two professors for this module. I prefer one professor for each module. Next, we are asked to present one paper on Thursday. First, we need to select one paper and send to the professors. We can only prepare the presentation after receiving their confirmation. But they are very busy. I received their at around 12 pm on Tuesday. I can only prepare the presentation on Wednesday. But I also have homework from the other module. I don't have enough time to prepare it. /No/

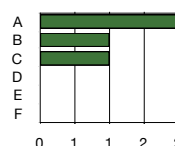
J: STUDENT AND MODULE CHARACTERISTICS



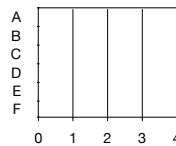
J8 - previous modules



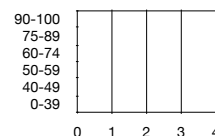
J7 - Expected Grades



Student Grades



Student Grades



AM0105 - Water - Analysis of Organic Components.

A: LEARNING



C: ORGANIZATION



D: GROUP INTERACTION



F: BREADTH



G: EXAMINATIONS



H: ASSIGNMENTS



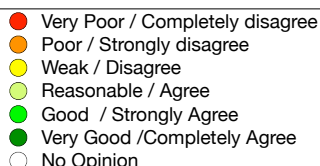
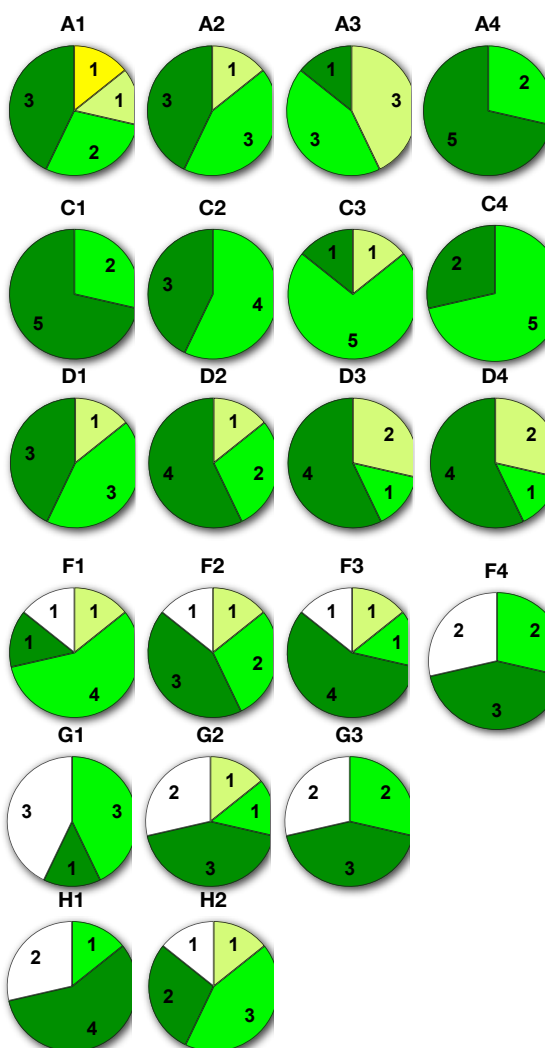
I: OVERALL



J: Infrastructures



K: Student Performance



Module:
Ac. Year

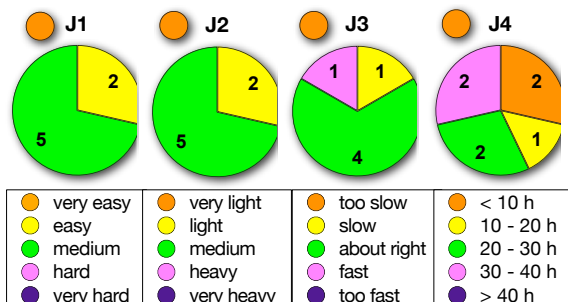
AM0105
2012/2013

no. of students in study plan:	6
no. of evaluated students:	7
no. of questionnaires delivered:	7

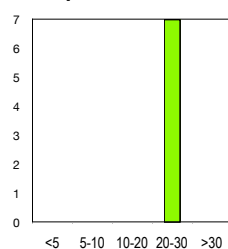
STUDENT COMMENTS

I have complain in this module, he has generally biases./

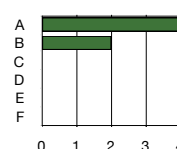
J: STUDENT AND MODULE CHARACTERISTICS



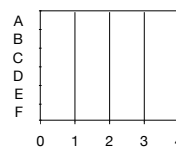
J8 - previous modules



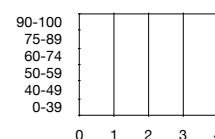
J7 - Expected Grades



Student Grades



Student Grades



AM0106 - Water - Microbiological Analysis.

A: LEARNING



C: ORGANIZATION



D: GROUP INTERACTION



F: BREADTH



G: EXAMINATIONS



H: ASSIGNMENTS



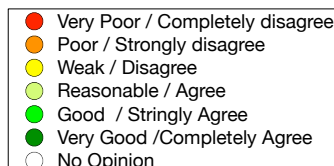
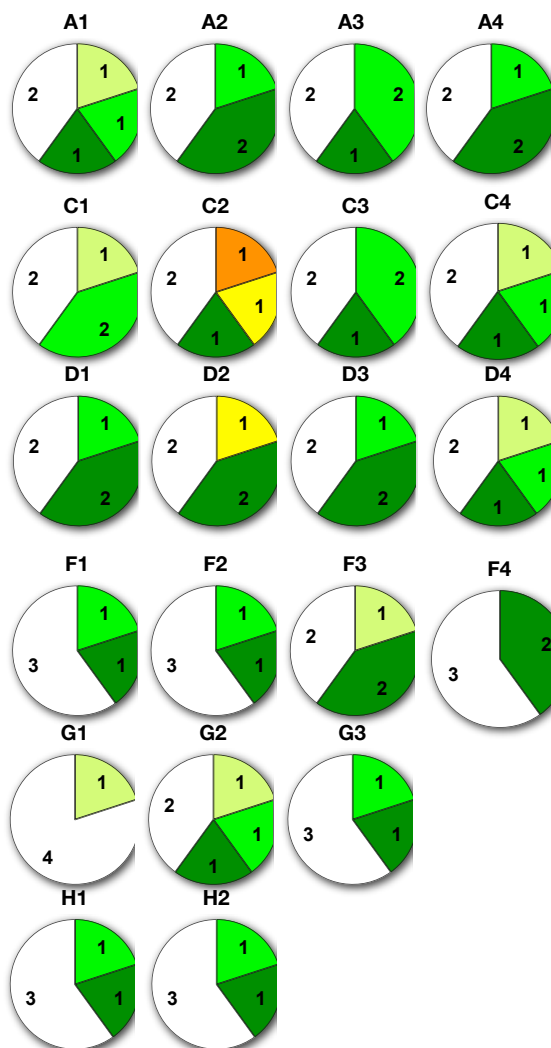
I: OVERALL



J: Infrastructures



K: Student Performance



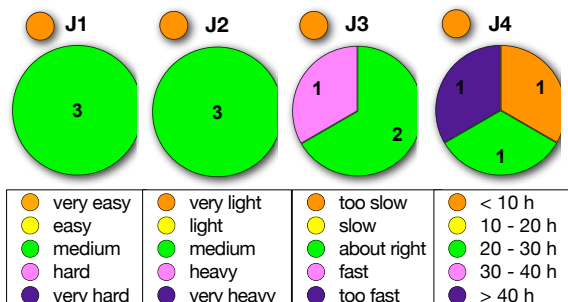
Module:
Ac. Year

AM0106
2012/2013

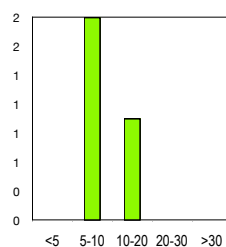
no. of students in study plan:	5
no. of evaluated students:	5
no. of questionnaires delivered:	5

STUDENT COMMENTS

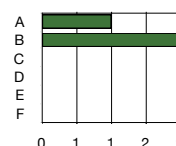
J: STUDENT AND MODULE CHARACTERISTICS



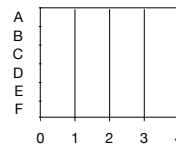
J8 - previous modules



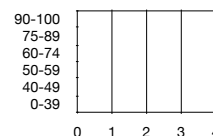
J7 - Expected Grades



Student Grades



Student Grades



AM0204 - Foods - Microbiological Analysis.

A: LEARNING



C: ORGANIZATION



D: GROUP INTERACTION



F: BREADTH



G: EXAMINATIONS



H: ASSIGNMENTS



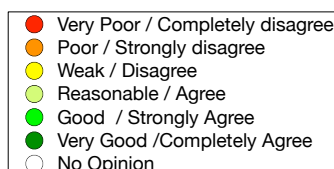
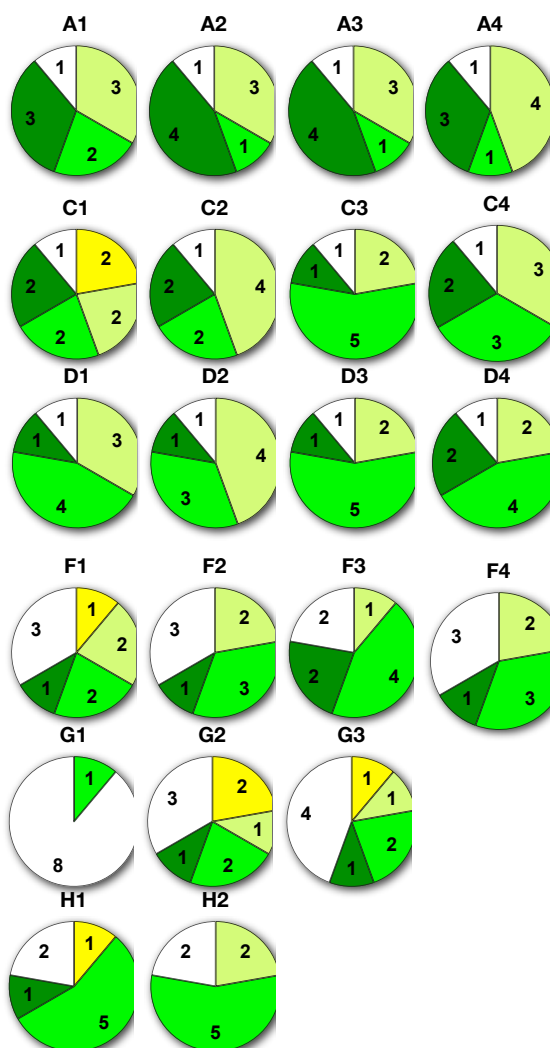
I: OVERALL



J: Infrastructures



K: Student Performance



Module:
Ac. Year

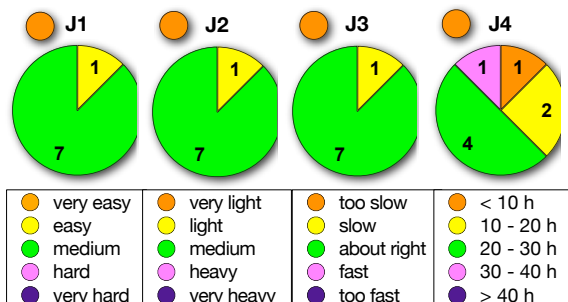
AM0204
2012/2013

no. of students in study plan:	8
no. of evaluated students:	9
no. of questionnaires delivered:	9

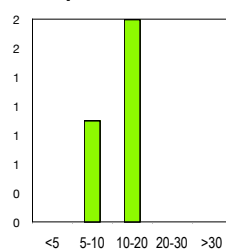
STUDENT COMMENTS

The practical part was nice, so its better to give much time for practical part.I understand a lot of things in the laboratory compare with in the class(theoretical part)./module is very useful and should be discussed in the broad sense and in detail so that overall concept may clear. To be in detail it is better to include it into two modules as issue of microbiological study is always in front line around the world./

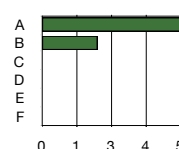
J: STUDENT AND MODULE CHARACTERISTICS



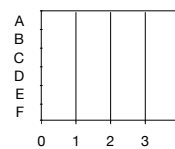
J8 - previous modules



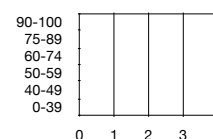
J7 - Expected Grades



Student Grades



Student Grades



AM0205 - Foods - Sample Treatment.

A: LEARNING



C: ORGANIZATION



D: GROUP INTERACTION



F: BREADTH



G: EXAMINATIONS



H: ASSIGNMENTS



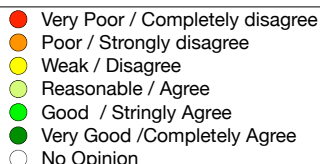
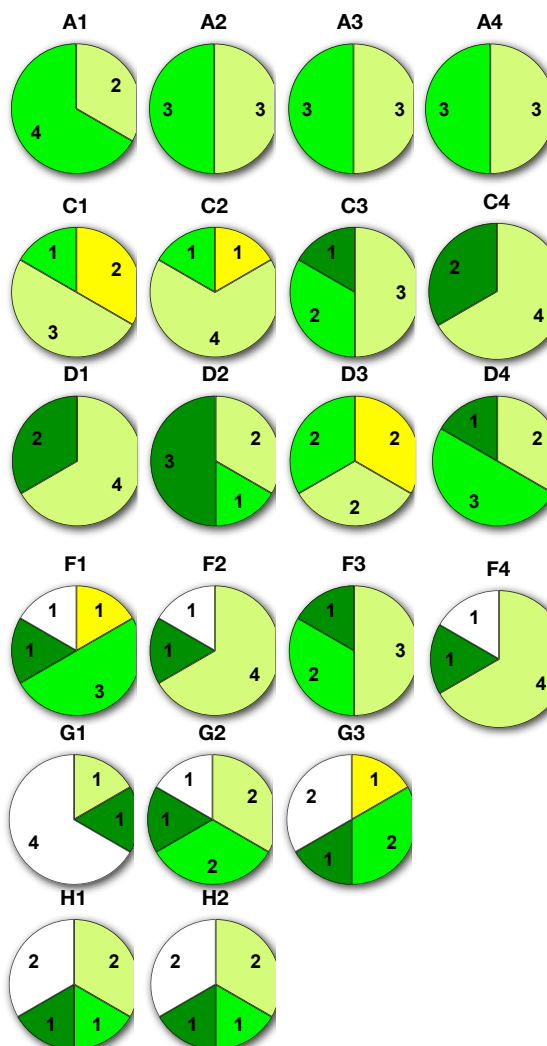
I: OVERALL



J: Infrastructures



K: Student Performance



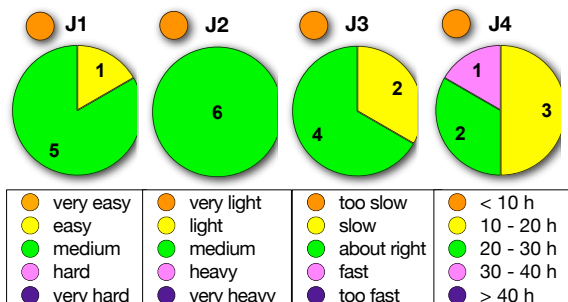
Module: **AM0205**
Ac. Year: 2012/2013

no. of students in study plan:	4
no. of evaluated students:	6
no. of questionnaires delivered:	6

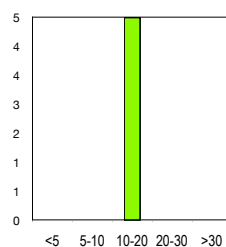
STUDENT COMMENTS

This was an interesting module. The teacher was nice and friendly. I learned a lot from this module. The assignments and class reporting of assignments were also effective in over-learning the lessons./

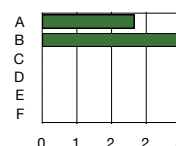
J: STUDENT AND MODULE CHARACTERISTICS



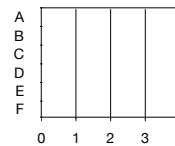
J8 - previous modules



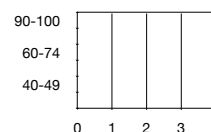
J7 - Expected Grades



Student Grades

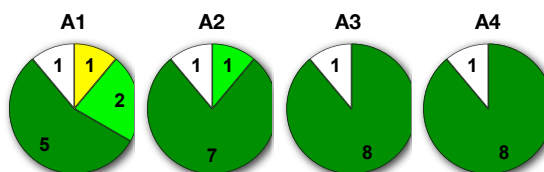


Student Grades

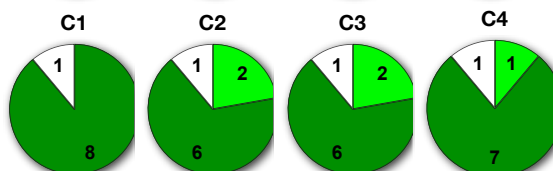


AM0207 - Extraction Methods for Solid Foods

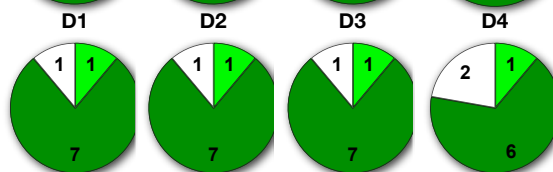
A: LEARNING



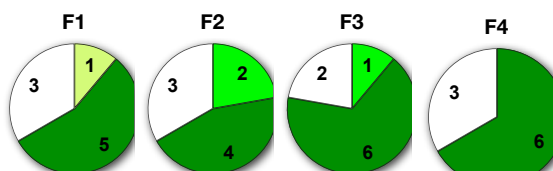
C: ORGANIZATION



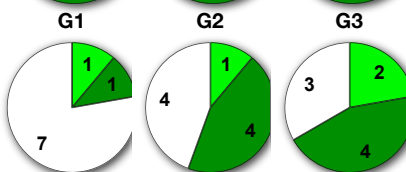
D: GROUP INTERACTION



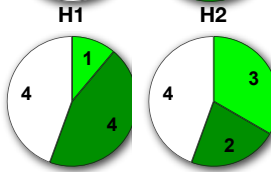
F: BREADTH



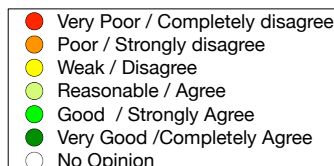
G: EXAMINATIONS



H: ASSIGNMENTS



I: OVERALL



J: Infrastructures



K: Student Performance



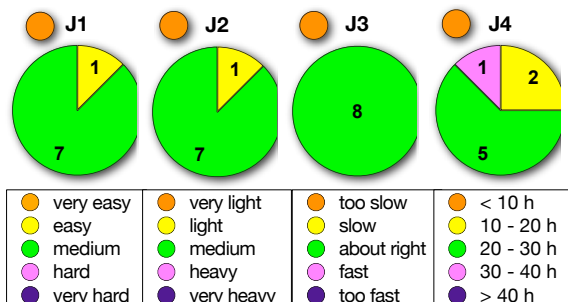
Module: **AM0207**
Ac. Year: 2012/2013

no. of students in study plan:	7
no. of evaluated students:	10
no. of questionnaires delivered:	10

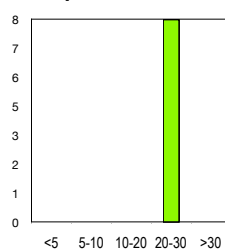
STUDENT COMMENTS

This module increased my interest about the extraction techniques. Performing some techniques in the laboratory is very good that is why I appreciate this module a lot. Job well done for the professor./The professor was very power full and he is very kind/

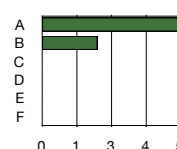
J: STUDENT AND MODULE CHARACTERISTICS



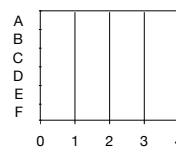
J8 - previous modules



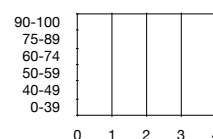
J7 - Expected Grades



Student Grades

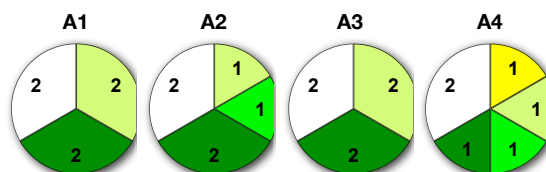


Student Grades

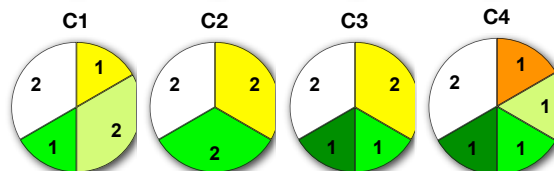


AM0301 - In Vitro Directive and CEN Standards.

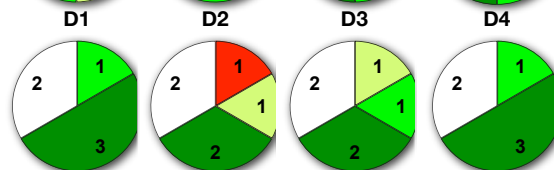
A: LEARNING



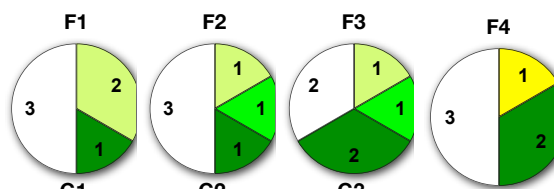
C: ORGANIZATION



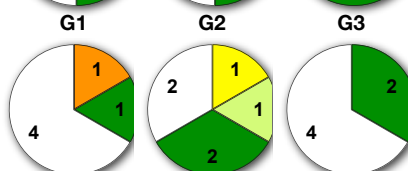
D: GROUP INTERACTION



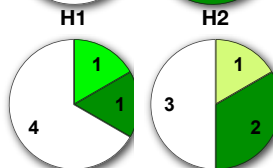
F: BREADTH



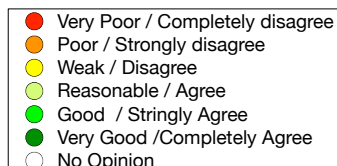
G: EXAMINATIONS



H: ASSIGNMENTS



I: OVERALL



J: Infrastructures



K: Student Performance



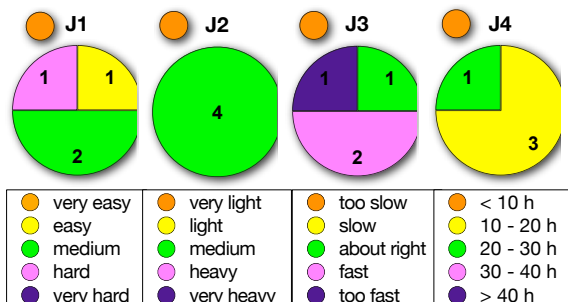
Module: **AM0301**
Ac. Year: 2012/2013

no. of students in study plan:	5
no. of evaluated students:	6
no. of questionnaires delivered:	6

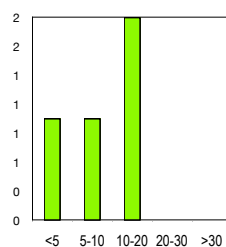
STUDENT COMMENTS

In my opinion, the teacher has a very good work experience. She could have a different presentation structure. She could add another point of evaluation in order to not have only one evaluation point./

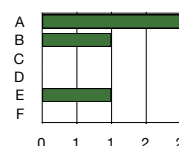
J: STUDENT AND MODULE CHARACTERISTICS



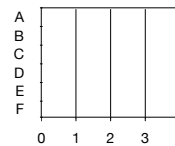
J8 - previous modules



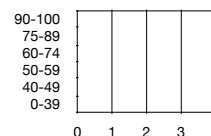
J7 - Expected Grades



Student Grades

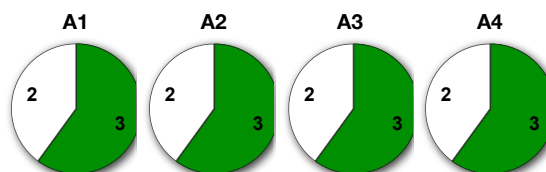


Student Grades

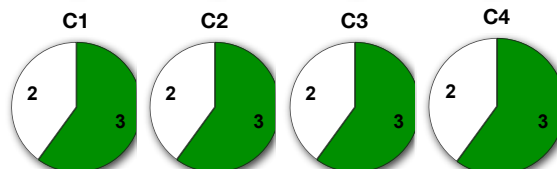


AM0305 - Urine and Body Fluids Analysis

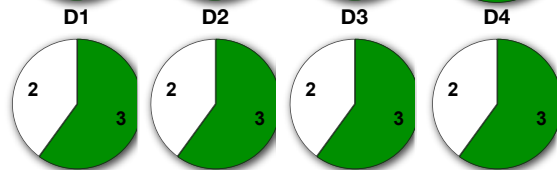
A: LEARNING



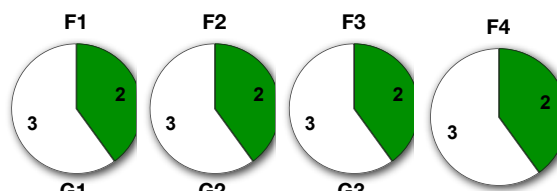
C: ORGANIZATION



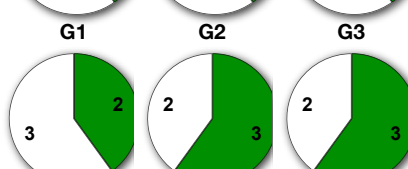
D: GROUP INTERACTION



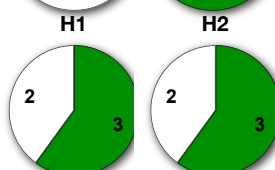
F: BREADTH



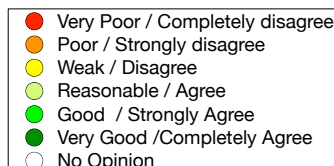
G: EXAMINATIONS



H: ASSIGNMENTS



I: OVERALL



J: Infrastructures



K: Student Performance



Module:

AM0305

Ac. Year

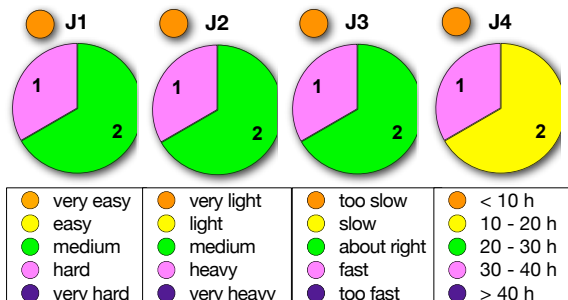
2012/2013

no. of students in study plan:	4
no. of evaluated students:	5
no. of questionnaires delivered:	5

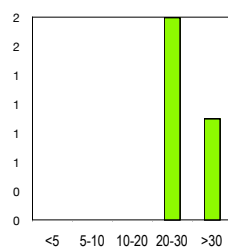
STUDENT COMMENTS

0

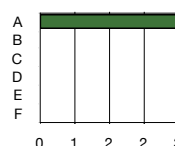
J: STUDENT AND MODULE CHARACTERISTICS



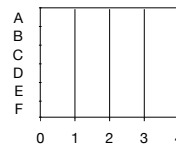
J8 - previous modules



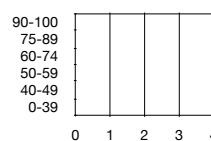
J7 - Expected Grades



Student Grades

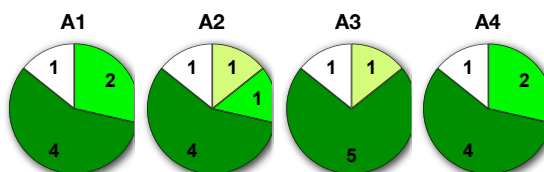


Student Grades

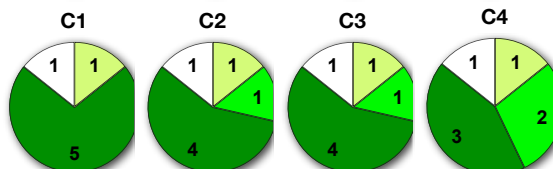


AM0309 - Fundamentals af Biochemical Analysis.

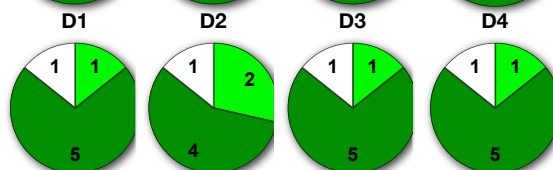
A: LEARNING



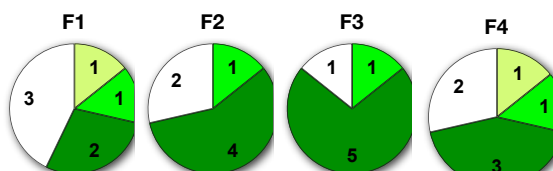
C: ORGANIZATION



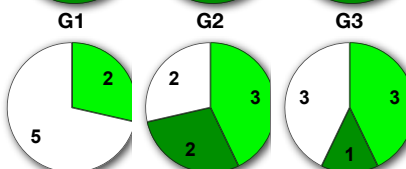
D: GROUP INTERACTION



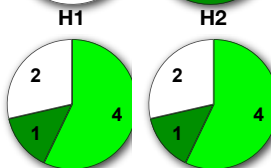
F: BREADTH



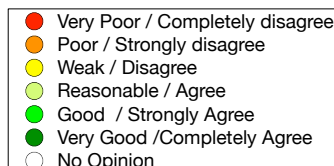
G: EXAMINATIONS



H: ASSIGNMENTS



I: OVERALL



J: Infrastructures



K: Student Performance



Module:

AM0309

Ac. Year

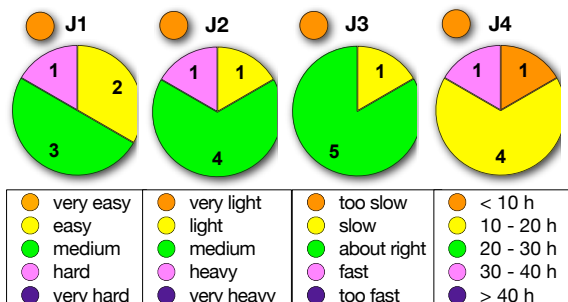
2012/2013

no. of students in study plan:	4
no. of evaluated students:	7
no. of questionnaires delivered:	7

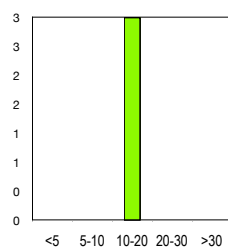
STUDENT COMMENTS

I have only this comment still We did not received the lecture notes/materials./

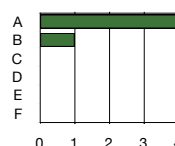
J: STUDENT AND MODULE CHARACTERISTICS



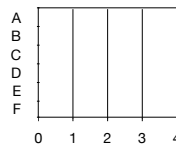
J8 - previous modules



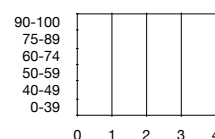
J7 - Expected Grades



Student Grades

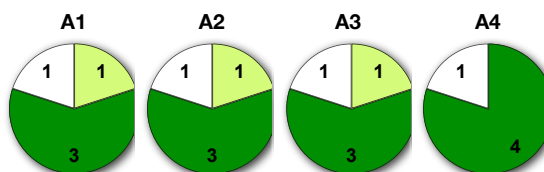


Student Grades

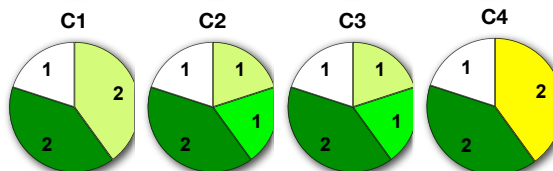


AM0311 - Virology.

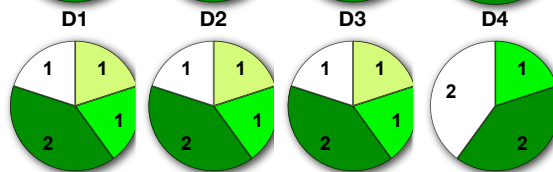
A: LEARNING



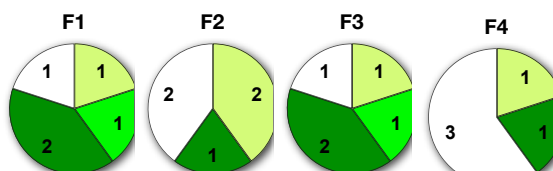
C: ORGANIZATION



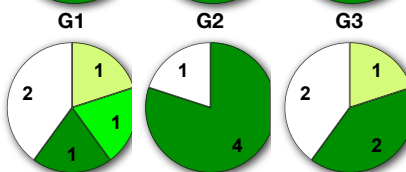
D: GROUP INTERACTION



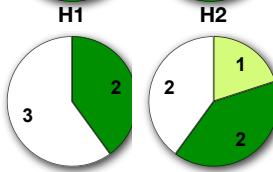
F: BREADTH



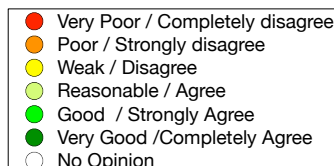
G: EXAMINATIONS



H: ASSIGNMENTS



I: OVERALL



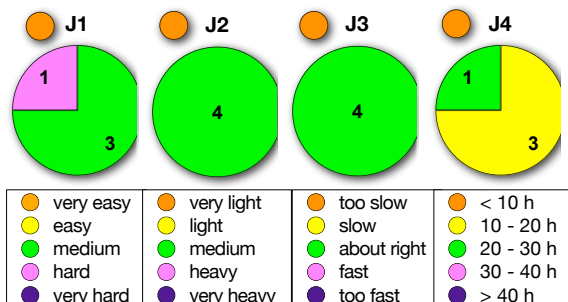
J: Infrastructures



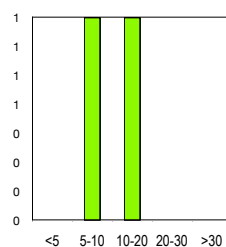
K: Student Performance



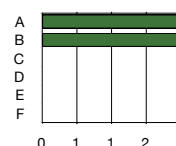
J: STUDENT AND MODULE CHARACTERISTICS



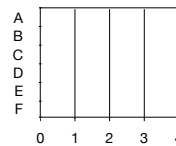
J8 - previous modules



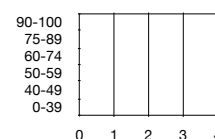
J7 - Expected Grades



Student Grades

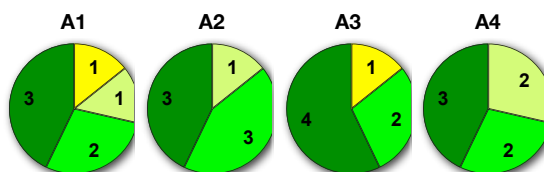


Student Grades



QM0801 - Design of Sample Strategies and Sampling Techniques.

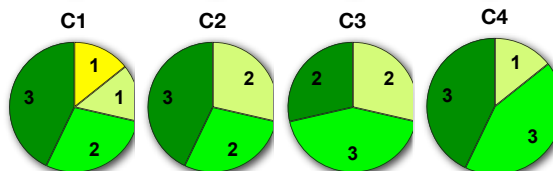
A: LEARNING



Module:
Ac. Year

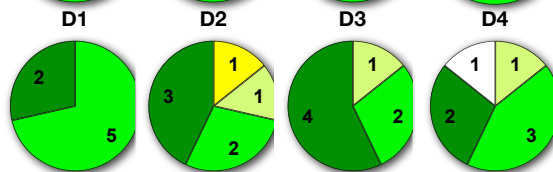
AM0801
2012/2013

C: ORGANIZATION



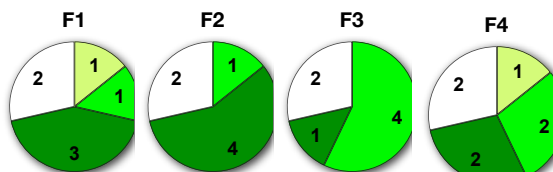
no. of students in study plan:	5
no. of evaluated students:	8
no. of questionnaires delivered:	8

D: GROUP INTERACTION

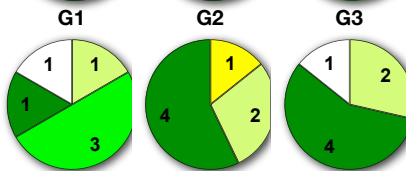


STUDENT COMMENTS
No/

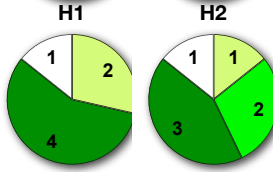
F: BREADTH



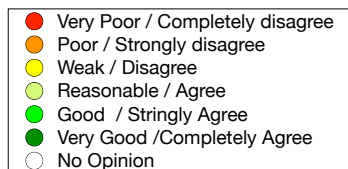
G: EXAMINATIONS



H: ASSIGNMENTS



I: OVERALL



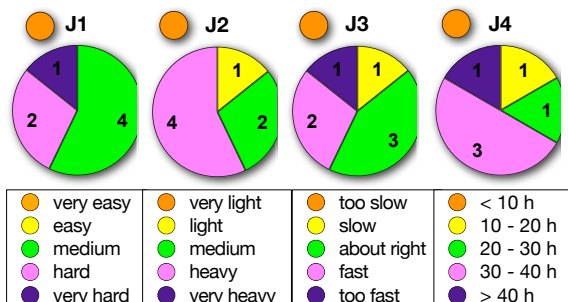
J: Infrastructures



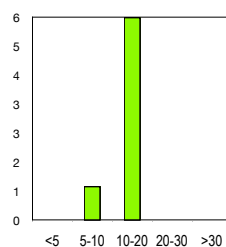
K: Student Performance



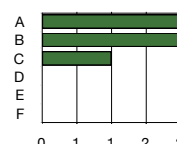
J: STUDENT AND MODULE CHARACTERISTICS



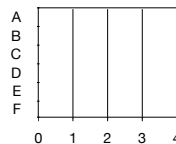
J8 - previous modules



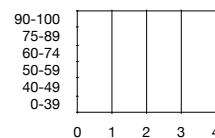
J7 - Expected Grades



Student Grades

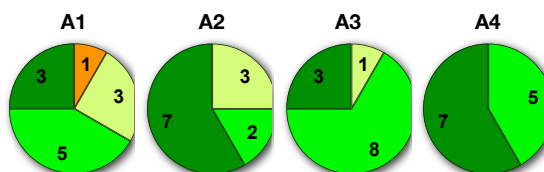


Student Grades



AM0903 - Introduction to Chromatographic Techniques.

A: LEARNING



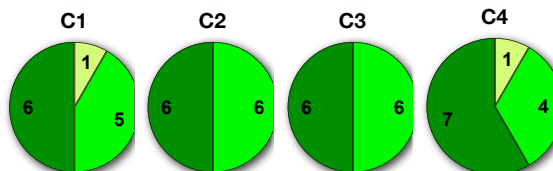
Module:

AM0903

Ac. Year

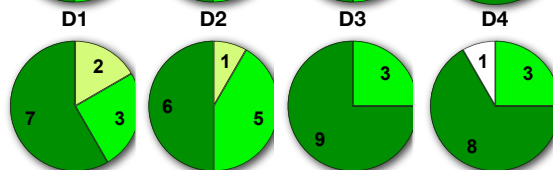
2012/2013

C: ORGANIZATION



no. of students in study plan:	10
no. of evaluated students:	12
no. of questionnaires delivered:	12

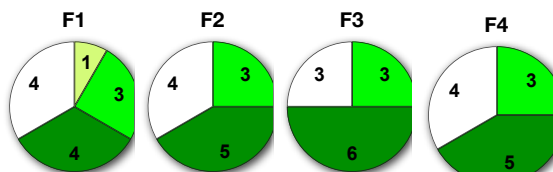
D: GROUP INTERACTION



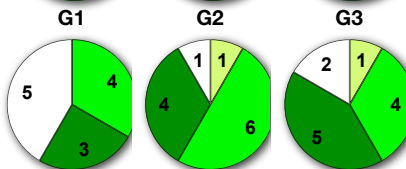
STUDENT COMMENTS

#REF!

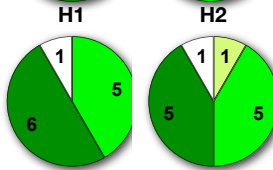
F: BREADTH



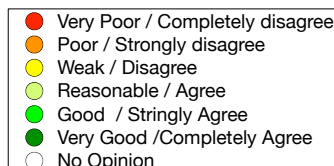
G: EXAMINATIONS



H: ASSIGNMENTS



I: OVERALL



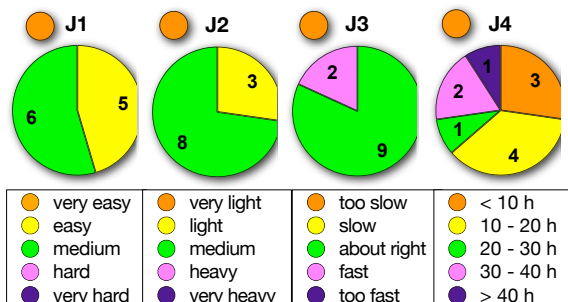
J: Infrastructures



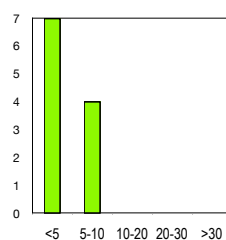
K: Student Performance



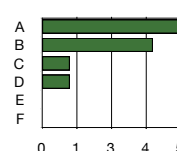
J: STUDENT AND MODULE CHARACTERISTICS



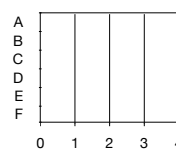
J8 - previous modules



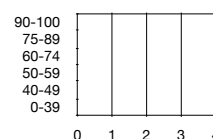
J7 - Expected Grades



Student Grades

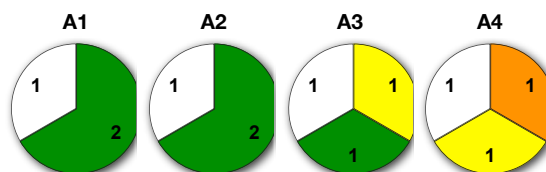


Student Grades

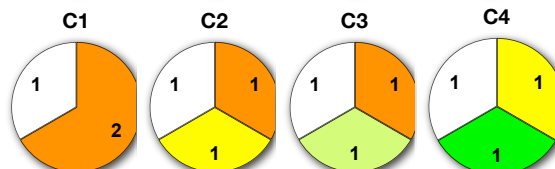


AM0904 - Electrophoresis.

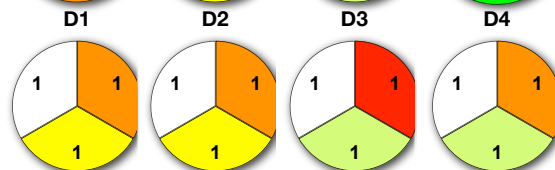
A: LEARNING



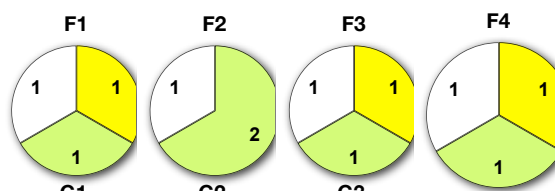
C: ORGANIZATION



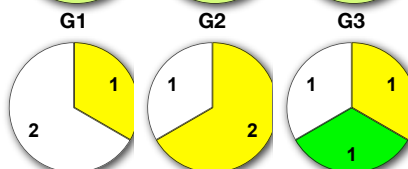
D: GROUP INTERACTION



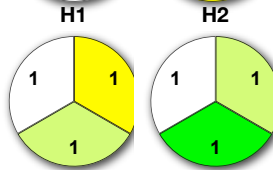
F: BREADTH



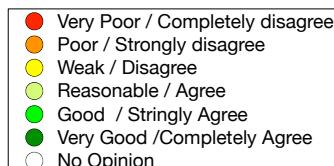
G: EXAMINATIONS



H: ASSIGNMENTS



I: OVERALL



J: Infrastructures



K: Student Performance

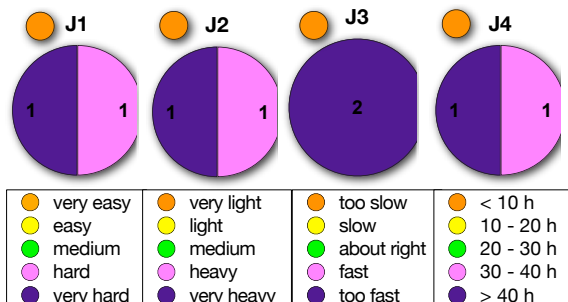


Module: **AM0904**
Ac. Year: 2012/2013

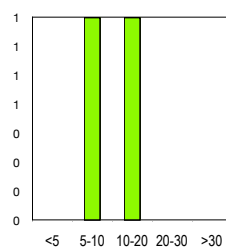
no. of students in study plan:	3
no. of evaluated students:	3
no. of questionnaires delivered:	3

STUDENT COMMENTS
0

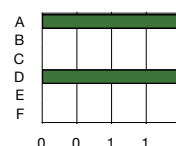
J: STUDENT AND MODULE CHARACTERISTICS



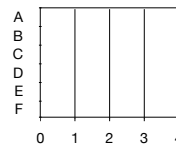
J8 - previous modules



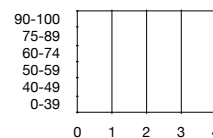
J7 - Expected Grades



Student Grades



Student Grades



AM0910 - Atomic Spectroscopy.

A: LEARNING



C: ORGANIZATION



D: GROUP INTERACTION



F: BREADTH



G: EXAMINATIONS



H: ASSIGNMENTS



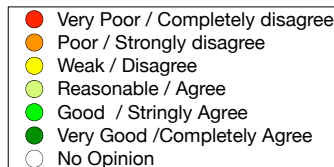
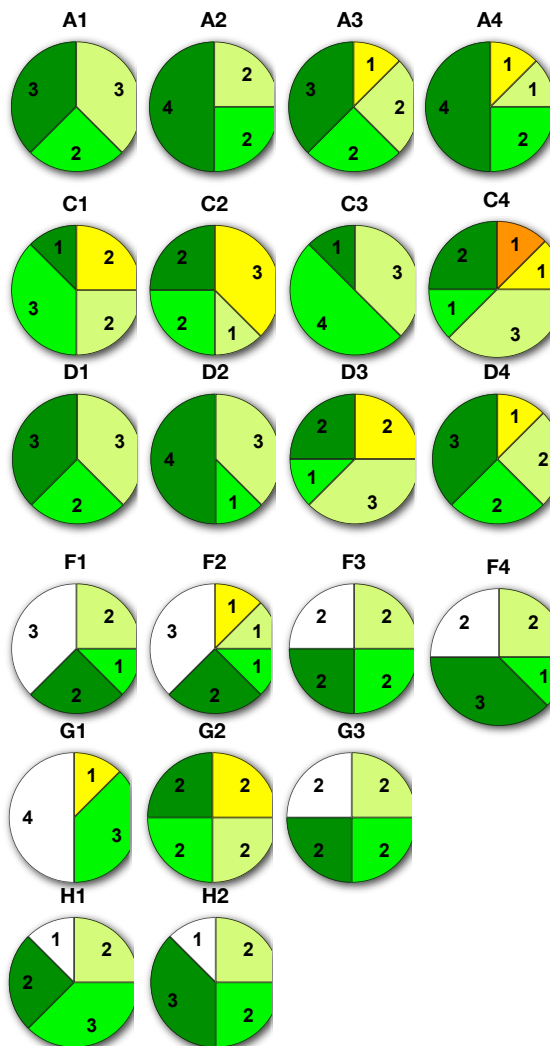
I: OVERALL



J: Infrastructures



K: Student Performance



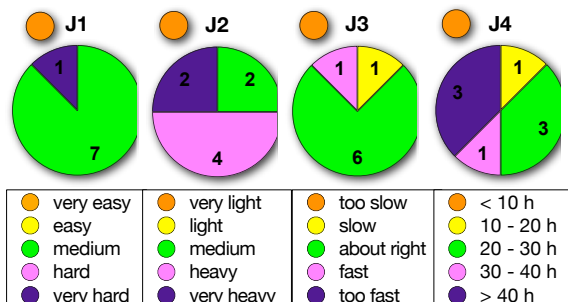
Module: **AM0910**
Ac. Year: **2012/2013**

no. of students in study plan:	6
no. of evaluated students:	8
no. of questionnaires delivered:	8

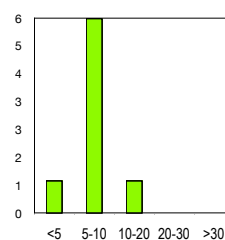
STUDENT COMMENTS

Four days to prepare an oral presentation is not enough, specially if we have to search for articles to do it./I dont like the evaluation for this module. We were assigned to look for 3 journals about the use of AAS or AES but we focused on method validation which is another module. I would appreciate it if we analyzed the instrumentation of AAS or AES. Also, they are not conscious about the time spent in every class session. We had so much extension in the class limiting us to do the other tasks. The teacher does not listen to the student's questions well resulting to the question being left unanswered. Aside from the oral reporting, we had examination and laboratory report. I don't know if this normal to have so many evaluation methods. But I like the visit to the institute where we are exposed to the different AAS/AES instruments./This module is a very dense module. I did learn the concepts behind the Atomic Spectroscopy instrumentation. However...The module has three evaluation methods: 1. Oral presentation comparing the method validations of three AAS or AES journals. This was very time-consuming for all of us because, initially, we had to look for three studies with different atomic spec method from the same matrices and with complete data for method validation. It was really difficult to look for this 3 journals, we spent at 3 nights looking for these journals. Of course, there are lots of journals however, not all have complete method validation data and it was really not easy to look for methods with the same matrix. And we are also limited with the analysis of just one metal assigned to us. So, again, it was not easy. Good thing they were considerate enough because after the students explained how impossible it was to look for those precious journals they allowed us to use studies with different matrices. But the point is, this journal-hunting we did was really time-consuming. They should have allowed us from the very start to use different matrices. Another thing about this presentation is, they want us to compare the method validation done. Why? I would have understand if we were to compare the instrumentations used like what we did in chromatography. Method validation was already discussed to us in our previous module and we already have a full module allotted just for that. I know that through repetition comes mastery of the subject. But I still think that this part was not necessary. 2. Laboratory report - This was a good evaluation method. Since this is an analytical module method, it is just right that to experience actual use of the instrument. However, the lab class took more than its allotted time. We were 3 hours overtime. I really appreciate that we had hands-on experience, but they should work on their time management. Maybe if we did the experiment in pairs it would have been faster. 3. Exam - I have no complaints with the exam. It was not easy but the questions are reasonable to assess what we have learned. I also think that introducing their many research programs was another unnecessary part of the module. That and the method validation they discussed. We won't be taking our thesis in Cadiz, so I don't quite understand the purpose of that. Maybe if they skipped those parts we never would have extended the class hours. Maybe if the objective of the oral presentation was changed this would have been a less stressful module. But we survived anyway, so maybe my comments could be considered overreacting. Teachers: Prof Galindo - I know that the professor is very very knowledgeable about the subject. I have no doubt about that. But it was just a bit difficult to understand her explanations. I understand that almost everyone has problems with the English language, even us students are not proficient in that aspect. There were times (and it happened many times) that when she was asked a question she would give an entirely unrelated answer, which was very confusing on our part. But I again i would like to commend her for her zest in teaching. Prof Estrella - She is very kind, easy to understand and she is very approachable. I'm not saying that this is a horrible module, on the contrary. The teachers are very eager to share their knowledge and to expose us to the different aspects of atomic spec, and I really appreciated that. I really did, especially the "tour" we had showing us the different types of equipment. /The teacher explained good./In my opinion, the fair evaluation of the module will depend on the way this lecturer will evaluate the presentation prepared by the students. One of the evaluation parameters (number of validation parameters found in the studied paper) that the lecturer mentioned during classes should be carefully used (not every papers have all validation parameters presented in the lectures)./

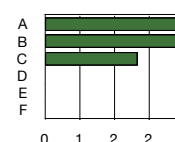
J: STUDENT AND MODULE CHARACTERISTICS



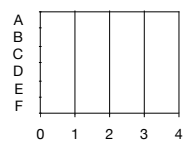
J8 - previous modules



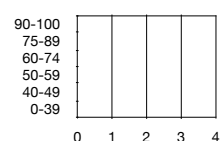
J7 - Expected Grades



Student Grades

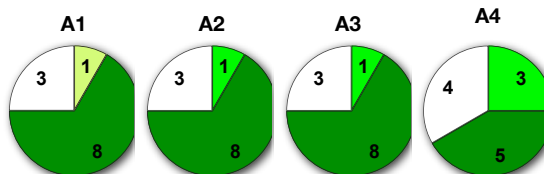


Student Grades

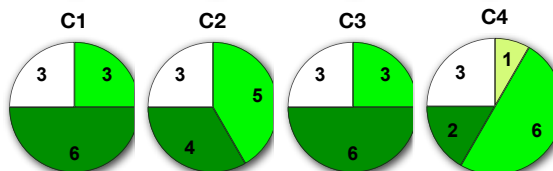


AM0912 - Mass Spectrometry.

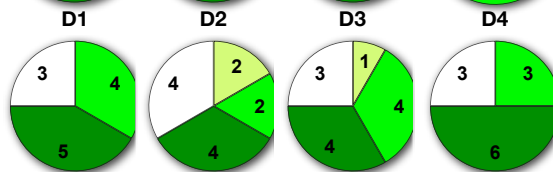
A: LEARNING



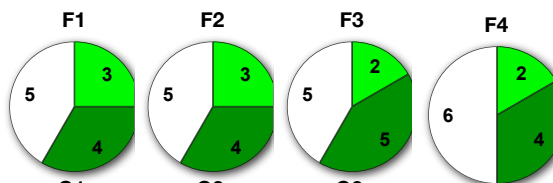
C: ORGANIZATION



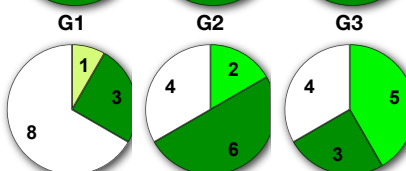
D: GROUP INTERACTION



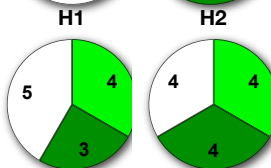
F: BREADTH



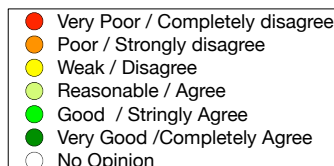
G: EXAMINATIONS



H: ASSIGNMENTS



I: OVERALL



J: Infrastructures



K: Student Performance



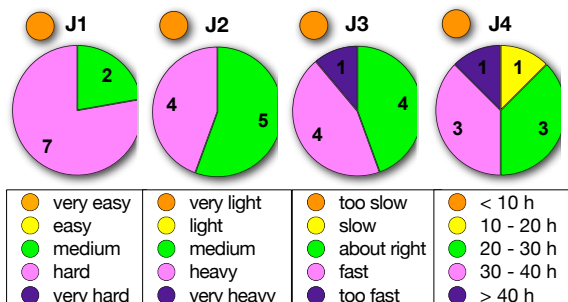
Module: **AM0912**
Ac. Year: 2012/2013

no. of students in study plan:	12
no. of evaluated students:	13
no. of questionnaires delivered:	12

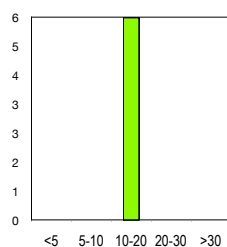
STUDENT COMMENTS

I commend Prof. Moyano. I understand that the subject is difficult but she tried her best to explain everything. It is now our time to exert effort and learn the whole thing. But she did her part excellently./No it was perfect./

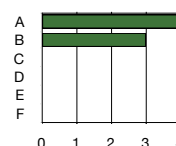
J: STUDENT AND MODULE CHARACTERISTICS



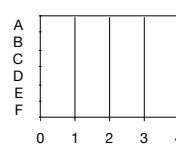
J8 - previous modules



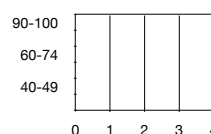
J7 - Expected Grades



Student Grades

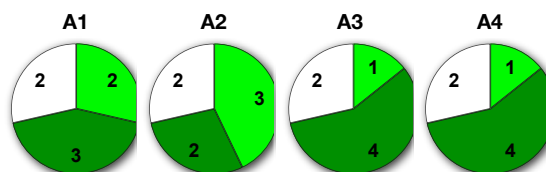


Student Grades

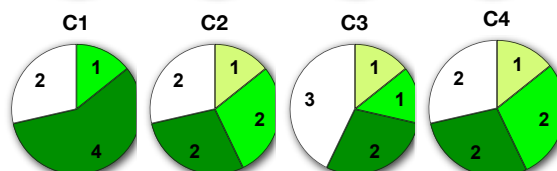


AM0913 - Hyphenated Techniques.

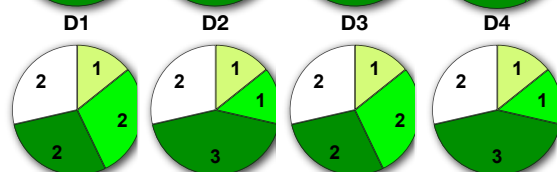
A: LEARNING



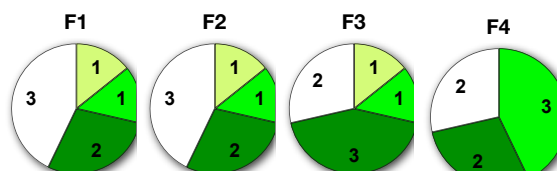
C: ORGANIZATION



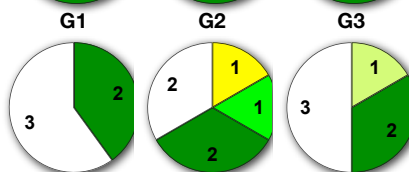
D: GROUP INTERACTION



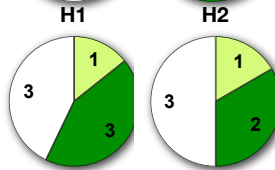
F: BREADTH



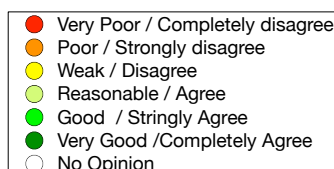
G: EXAMINATIONS



H: ASSIGNMENTS



I: OVERALL



J: Infrastructures



K: Student Performance



Module:
Ac. Year

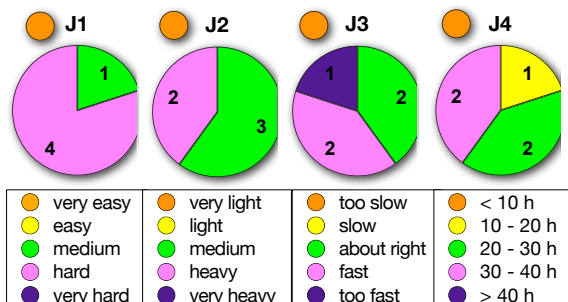
AM0913
2012/2013

no. of students in study plan:	5
no. of evaluated students:	7
no. of questionnaires delivered:	7

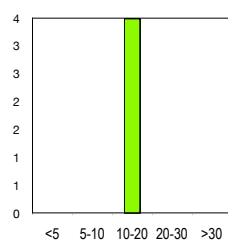
STUDENT COMMENTS

I have some comment about this module. She gave us more than enough knowledge on the area of this module. Thank you for Dr.Encarnación Moyano./

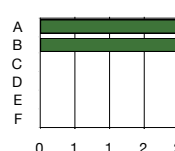
J: STUDENT AND MODULE CHARACTERISTICS



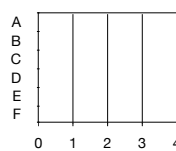
J8 - previous modules



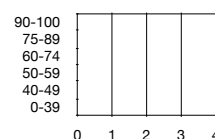
J7 - Expected Grades



Student Grades

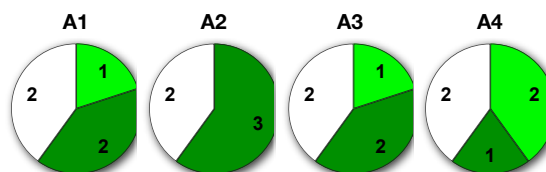


Student Grades

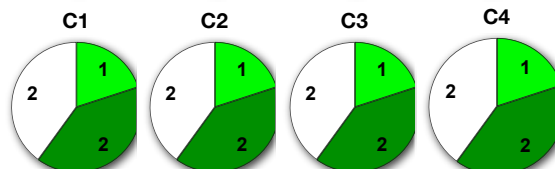


AM0915 - Potentiometric Techniques.

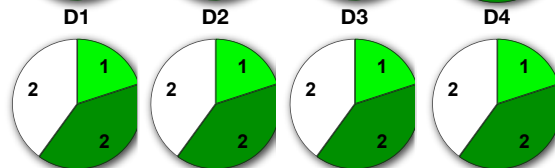
A: LEARNING



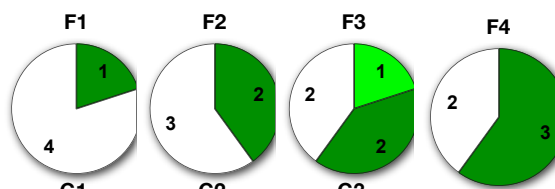
C: ORGANIZATION



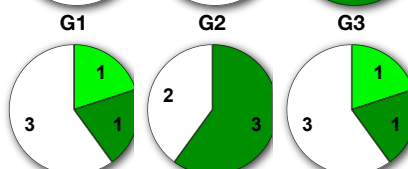
D: GROUP INTERACTION



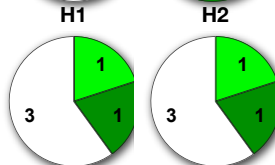
F: BREADTH



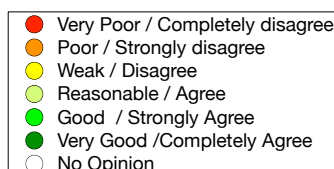
G: EXAMINATIONS



H: ASSIGNMENTS



I: OVERALL



J: Infrastructures



K: Student Performance

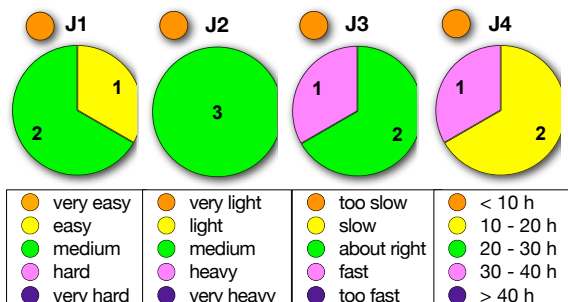


Module: **AM0915**
Ac. Year: 2012/2013

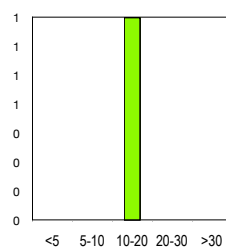
no. of students in study plan:	2
no. of evaluated students:	5
no. of questionnaires delivered:	5

STUDENT COMMENTS
0

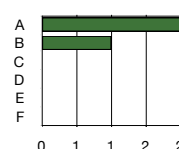
J: STUDENT AND MODULE CHARACTERISTICS



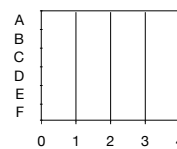
J8 - previous modules



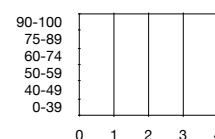
J7 - Expected Grades



Student Grades



Student Grades



AM0918 - Flow Injection Analysis.

A: LEARNING



C: ORGANIZATION



D: GROUP INTERACTION



F: BREADTH



G: EXAMINATIONS



H: ASSIGNMENTS



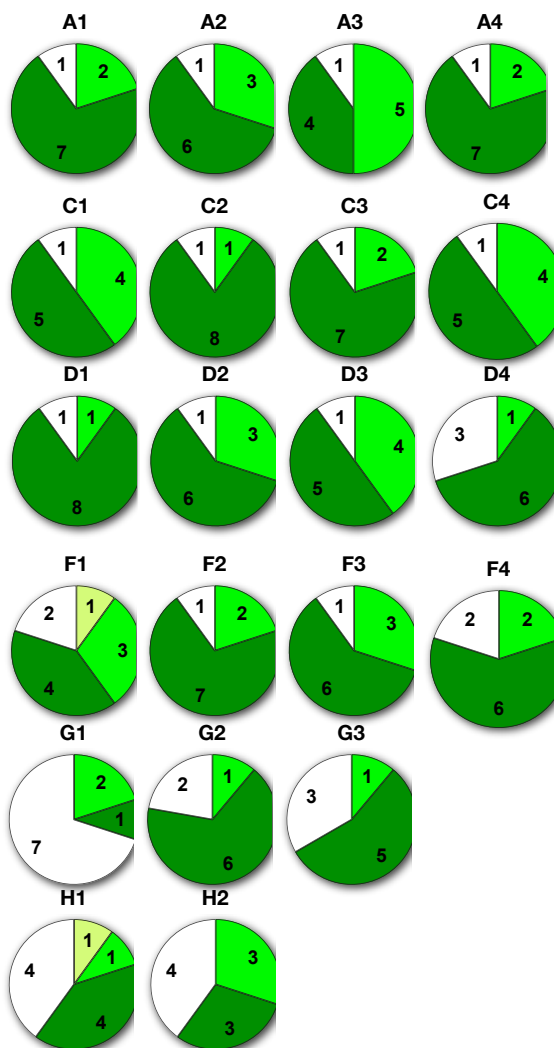
I: OVERALL



J: Infrastructures



K: Student Performance

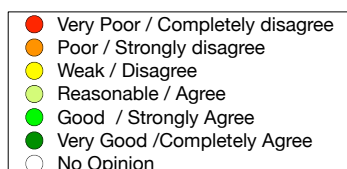


Module:
Ac. Year

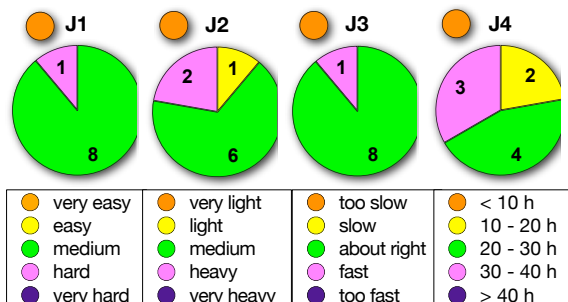
AM0918
2012/2013

no. of students in study plan:	10
no. of evaluated students:	10
no. of questionnaires delivered:	10

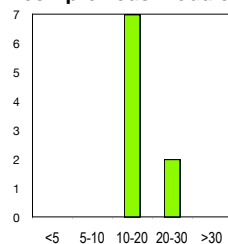
STUDENT COMMENTS



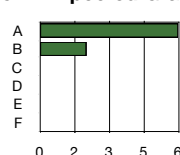
J: STUDENT AND MODULE CHARACTERISTICS



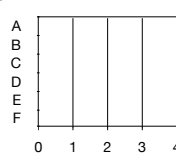
J8 - previous modules



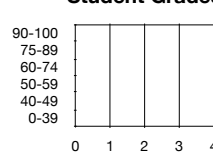
J7 - Expected Grades



Student Grades



Student Grades



AM0919 - Gas Chromatography.

A: LEARNING



C: ORGANIZATION



D: GROUP INTERACTION



F: BREADTH



G: EXAMINATIONS



H: ASSIGNMENTS



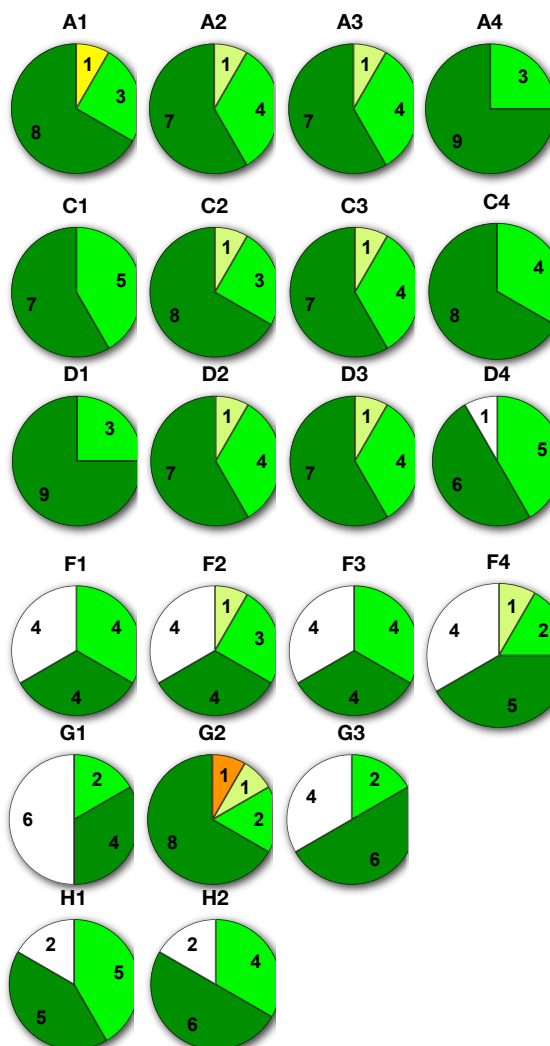
I: OVERALL



J: Infrastructures



K: Student Performance



Module:
Ac. Year

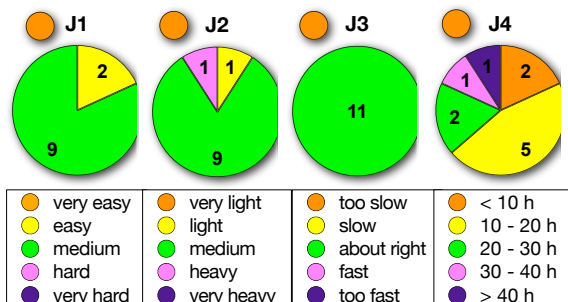
AM0919
2012/2013

no. of students in study plan:	12
no. of evaluated students:	12
no. of questionnaires delivered:	12

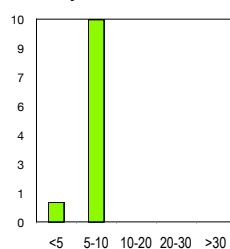
STUDENT COMMENTS

It is better if an actual GC analysis was done./In oral exposition the time given to present had not equally evaluated./I have high ratings for this module. Actually, ever since taking the Intro to Chrom of Prof Duran, his way of teaching has been my standard for how an analytical method module should be. The important aspects are discussed thoroughly, from bit of history, principles and theories, instrumentation, his actual experiences with the equipment, to the old and latest development of GC. However, it would have been better if we had an actual experiment with the equipment. Even just a short experiment, we could have done it by group so it won't take too much time. But even so, this was still a very good module. He was able to make-up for it by showing us real parts of the GC equipment and by just showing us short video-clips about the use of GC. Also, the comparative essay assignment we had was an effective way to apply and over-learn the lessons we had with him./

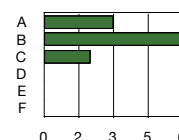
J: STUDENT AND MODULE CHARACTERISTICS



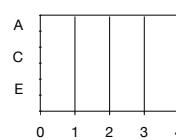
J8 - previous modules



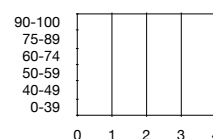
J7 - Expected Grades



Student Grades



Student Grades



AM0920 - Liquid Chromatography.

A: LEARNING



C: ORGANIZATION



D: GROUP INTERACTION



F: BREADTH



G: EXAMINATIONS



H: ASSIGNMENTS



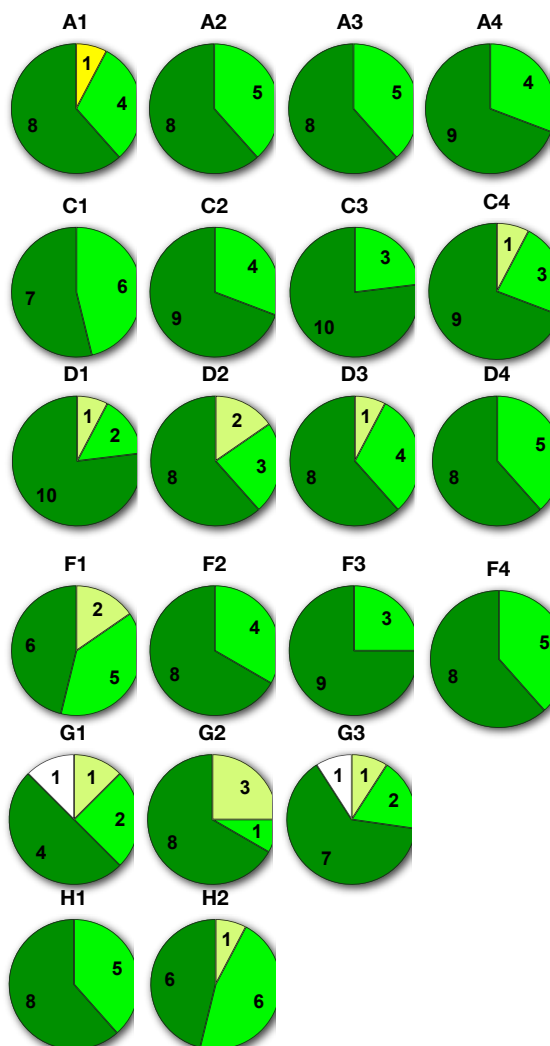
I: OVERALL



J: Infrastructures



K: Student Performance



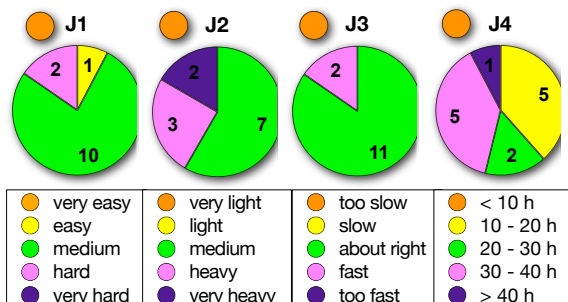
Module: **AM0920**
Ac. Year: 2012/2013

no. of students in study plan:	13
no. of evaluated students:	13
no. of questionnaires delivered:	13

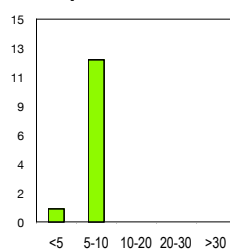
STUDENT COMMENTS

Practical session was good./Another Prof Duran module and another module I appreciated. I'm not saying that he is my favorite teacher, well he could be but that's not the point. The module was nicely taught and I could see how much he prepared for this module. His modules are always interesting but the schedule of his classes do not give him justice. People tend to be very sleepy after eating lunch. It was not his fault if the students were sleepy. I just feel sorry for him that his classes were scheduled during siesta time. I like that we had experiments on this module. However, the 10-12-page-review essay assignment he gave us was so head-ache inducing. It was still a very reasonable assignment but I wish we had exams instead. But over-all, this has been a fun module from a cool teacher. Looking forward to more modules with him./Time consideration is important when giving assignments and especially review essay./The teacher explained good./

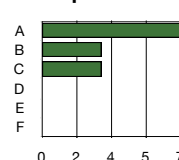
J: STUDENT AND MODULE CHARACTERISTICS



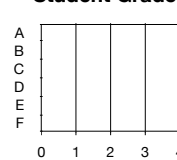
J8 - previous modules



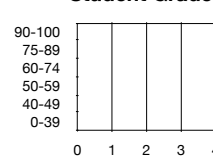
J7 - Expected Grades



Student Grades

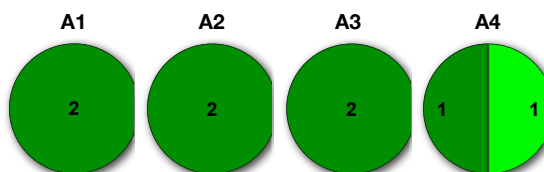


Student Grades

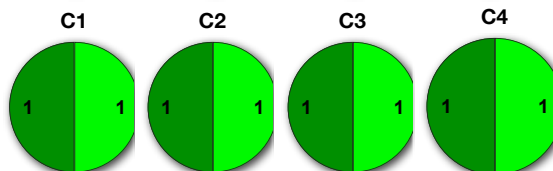


AM0921 - Voltammetric Techniques.

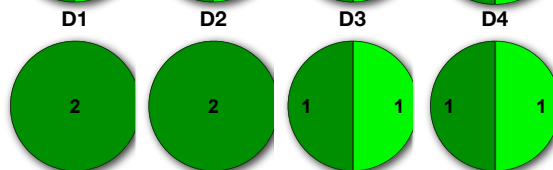
A: LEARNING



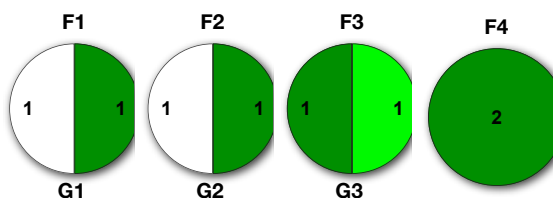
C: ORGANIZATION



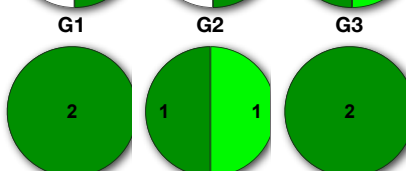
D: GROUP INTERACTION



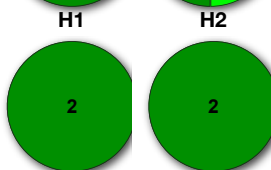
F: BREADTH



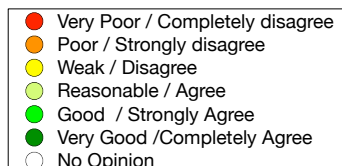
G: EXAMINATIONS



H: ASSIGNMENTS



I: OVERALL



J: Infrastructures



K: Student Performance

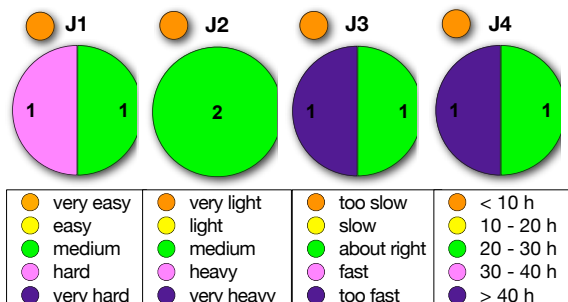


Module: **AM0921**
Ac. Year: 2012/2013

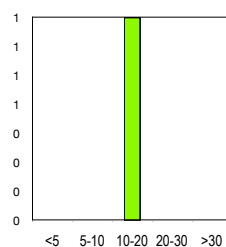
no. of students in study plan:	2
no. of evaluated students:	2
no. of questionnaires delivered:	2

STUDENT COMMENTS

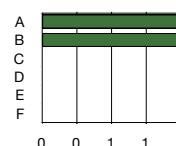
J: STUDENT AND MODULE CHARACTERISTICS



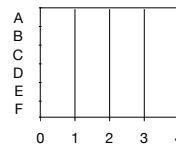
J8 - previous modules



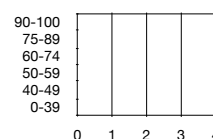
J7 - Expected Grades



Student Grades

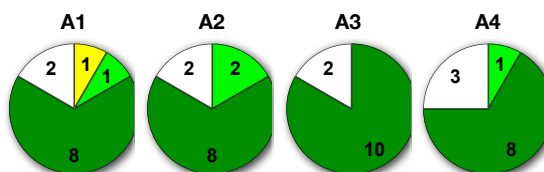


Student Grades

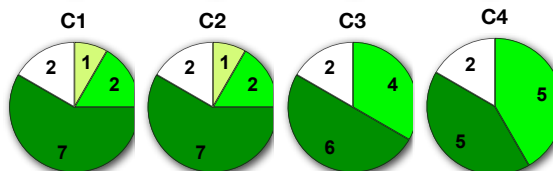


AM0923 - Solid Phase Extraction.

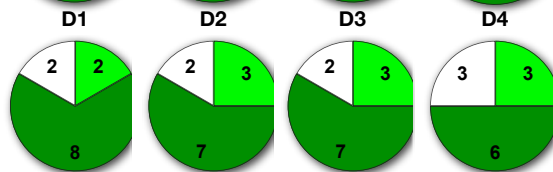
A: LEARNING



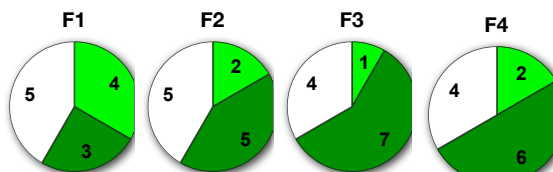
C: ORGANIZATION



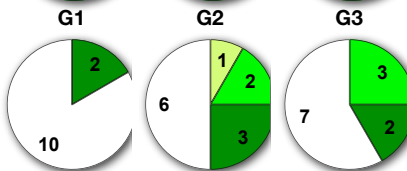
D: GROUP INTERACTION



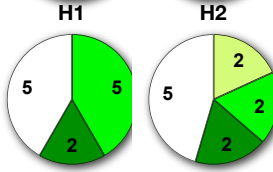
F: BREADTH



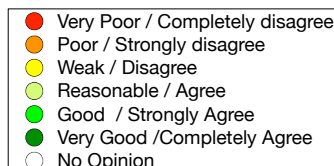
G: EXAMINATIONS



H: ASSIGNMENTS



I: OVERALL



J: Infrastructures



K: Student Performance



Module:

AM0923

Ac. Year

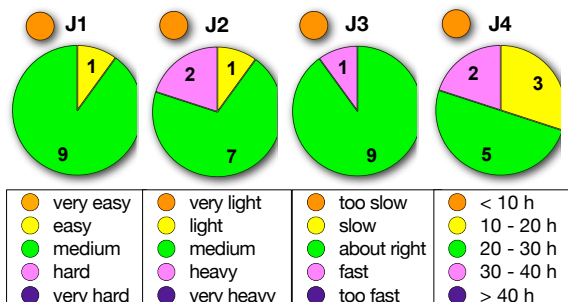
2012/2013

no. of students in study plan:	9
no. of evaluated students:	13
no. of questionnaires delivered:	12

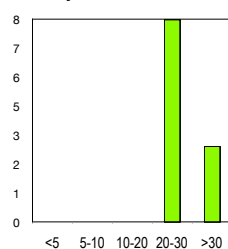
STUDENT COMMENTS

We performed SPE. It will be also good if SPME and SBSE will be done in the laboratory. Other than that, this module was well taught by the professor. His comments on the presentation is also good and practical. /The laboratory work does not cover the techniques which we studied in the class so I think it is better to increase the laboratory hours./

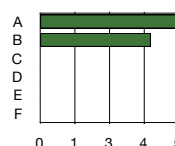
J: STUDENT AND MODULE CHARACTERISTICS



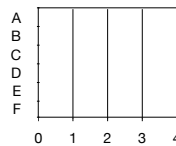
J8 - previous modules



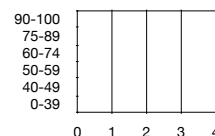
J7 - Expected Grades



Student Grades

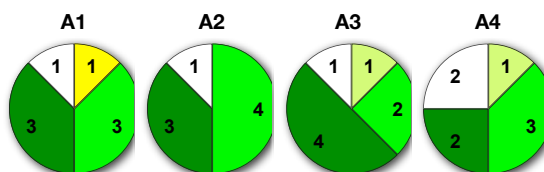


Student Grades

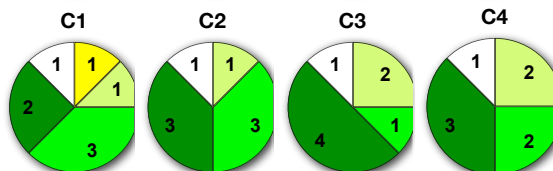


AM0925 - Quality Parameters and Optimization in Chromatography.

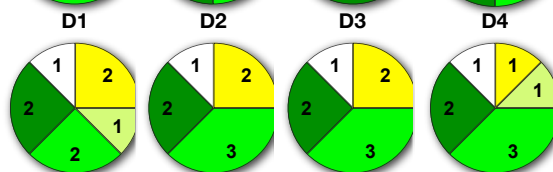
A: LEARNING



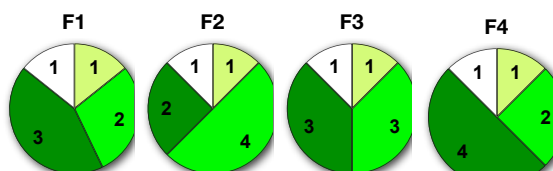
C: ORGANIZATION



D: GROUP INTERACTION



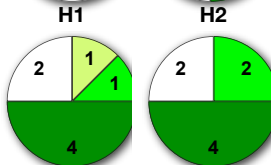
F: BREADTH



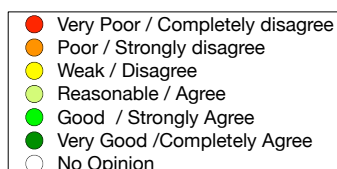
G: EXAMINATIONS



H: ASSIGNMENTS



I: OVERALL



J: Infrastructures



K: Student Performance



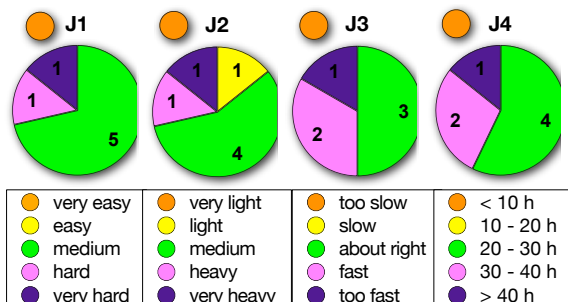
Module: **AM0925**
Ac. Year: 2012/2013

no. of students in study plan:	6
no. of evaluated students:	8
no. of questionnaires delivered:	8

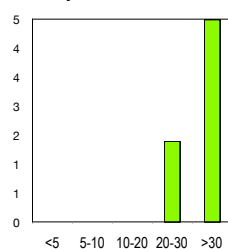
STUDENT COMMENTS

The professor should use the time wisely. We are spending just few hours in class because the professor teach very fast without checking that the students learn the concept. Before the student understands one concept, the professor is already talking about the other concept. The professor is also fast when dealing with exercises, we did not have time to look at it. I believe, the examination will be difficult for us because we did not grasp the concepts well.

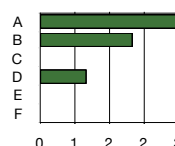
J: STUDENT AND MODULE CHARACTERISTICS



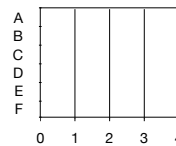
J8 - previous modules



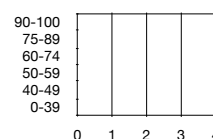
J7 - Expected Grades



Student Grades

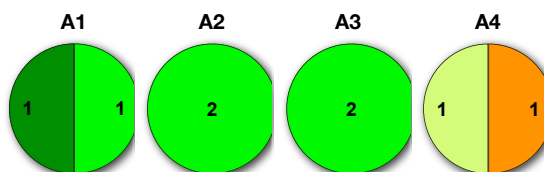


Student Grades



AM0927 - The Practice of Capillary Electrophoresis: Optimization and Method Development.

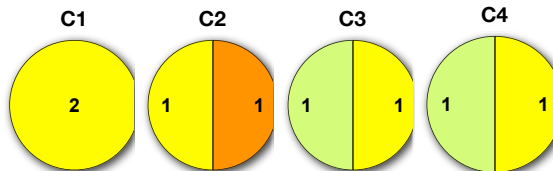
A: LEARNING



Module:
Ac. Year

AM0927
2012/2013

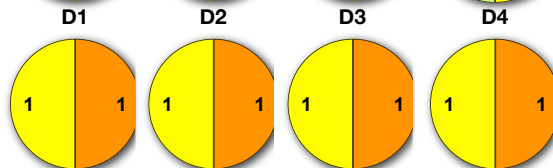
C: ORGANIZATION



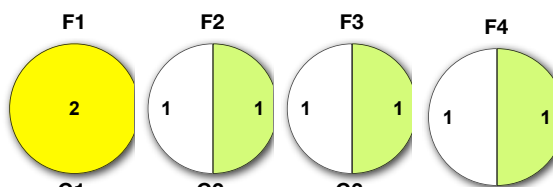
no. of students in study plan:	1
no. of evaluated students:	2
no. of questionnaires delivered:	2

STUDENT COMMENTS
0

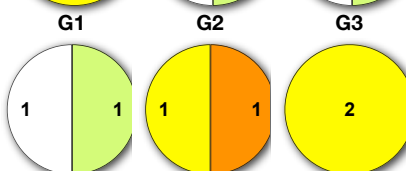
D: GROUP INTERACTION



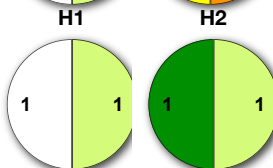
F: BREADTH



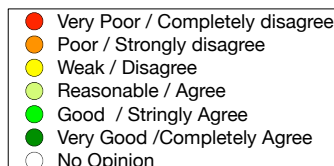
G: EXAMINATIONS



H: ASSIGNMENTS



I: OVERALL



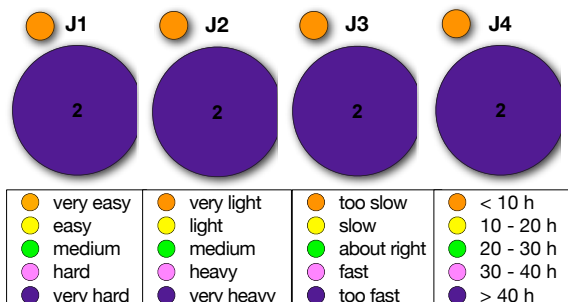
J: Infrastructures



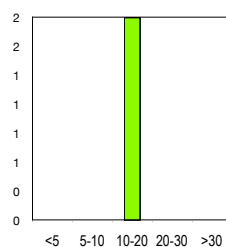
K: Student Performance



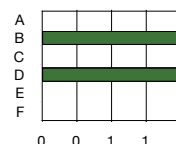
J: STUDENT AND MODULE CHARACTERISTICS



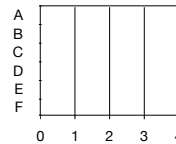
J8 - previous modules



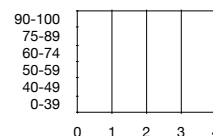
J7 - Expected Grades



Student Grades

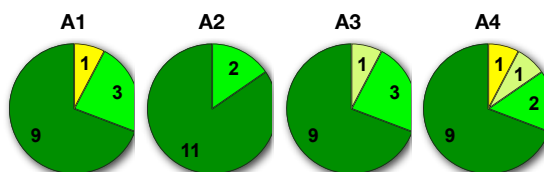


Student Grades

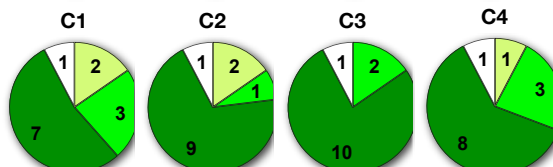


DA0101 - Measuring variability and Error Propagation.

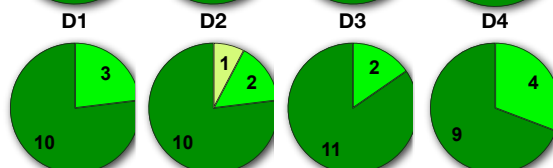
A: LEARNING



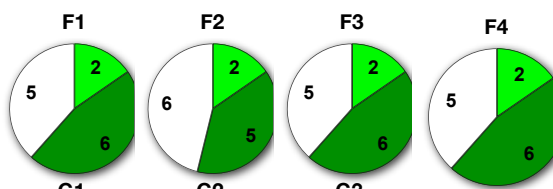
C: ORGANIZATION



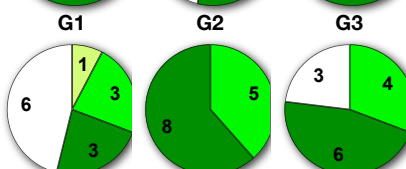
D: GROUP INTERACTION



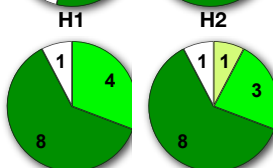
F: BREADTH



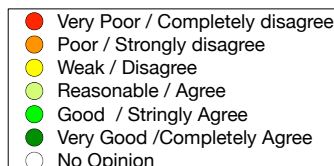
G: EXAMINATIONS



H: ASSIGNMENTS



I: OVERALL



J: Infrastructures



K: Student Performance



Module:
Ac. Year

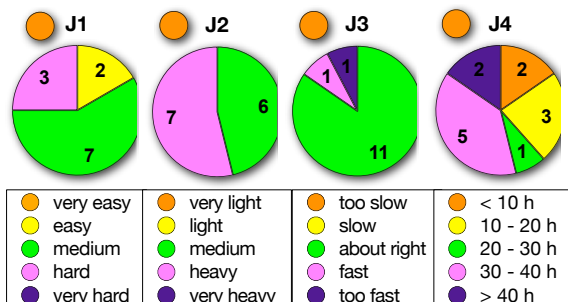
DA0101
2012/2013

no. of students in study plan:	14
no. of evaluated students:	13
no. of questionnaires delivered:	13

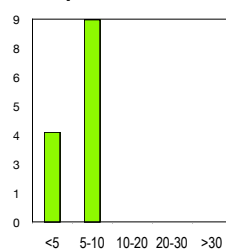
STUDENT COMMENTS

Crucial importance for quality of analytical laboratory/Highly appreciated giving daily homework, exercise to make practice. Its better to evaluate students exam at least some percent in class and the rest percent online exam this is my opinion (if the evaluation is students centered evaluation)./No comments/Prof Cavaco speaks good English which makes the module way way better to understand. Her daily assignments are very effective for students to really absorb and digest the lessons. I just hope we had time to do some of the control charts exercises especially the moving range./

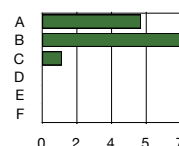
J: STUDENT AND MODULE CHARACTERISTICS



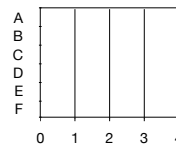
J8 - previous modules



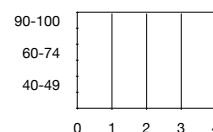
J7 - Expected Grades



Student Grades



Student Grades



DA0103 - Regression Analysis.

A: LEARNING



C: ORGANIZATION



D: GROUP INTERACTION



F: BREADTH



G: EXAMINATIONS



H: ASSIGNMENTS



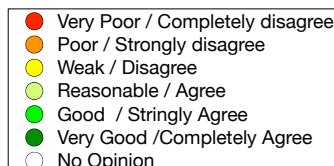
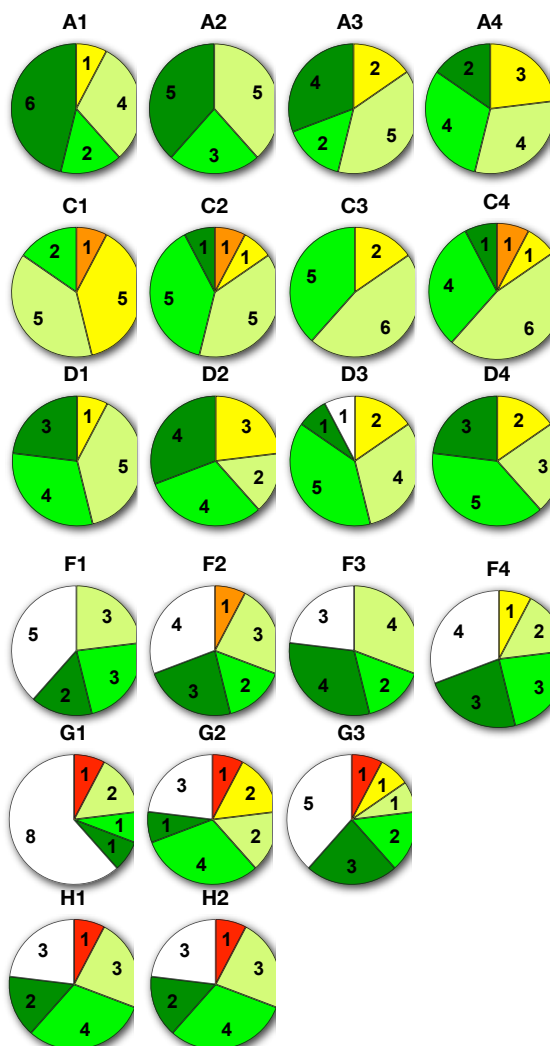
I: OVERALL



J: Infrastructures



K: Student Performance



Module:
Ac. Year

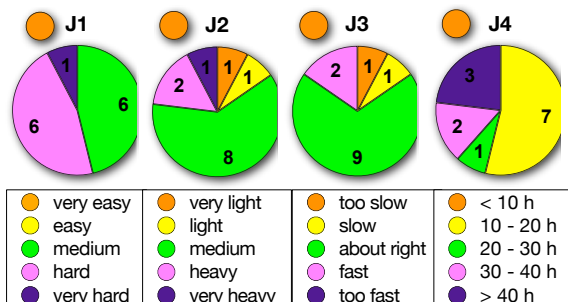
DA0103
2012/2013

no. of students in study plan:	14
no. of evaluated students:	13
no. of questionnaires delivered:	13

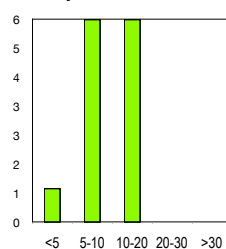
STUDENT COMMENTS

No recommended bibliography./It is better if exercises were done in class./there was no any reaction between the instructor and students./ This module could be improved by giving the students actual structured exercises instead of him showing us how to do it in excel but refusing to give us the solutions. He should give us examples with more detailed solutions. Hands-on exercises would be greatly appreciated to apply the theoretical part./Although the materials given by the lecturer were usefull, in my opinion there should be more points of evaluation, and not only the assignment given by the teacher./

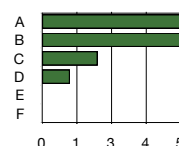
J: STUDENT AND MODULE CHARACTERISTICS



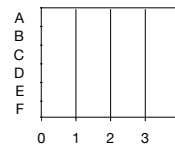
J8 - previous modules



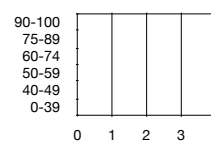
J7 - Expected Grades



Student Grades



Student Grades



DA0104 - Statistical Decision and Analysis of Variance.

A: LEARNING



C: ORGANIZATION



D: GROUP INTERACTION



F: BREADTH



G: EXAMINATIONS



H: ASSIGNMENTS



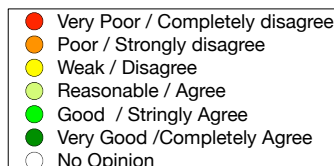
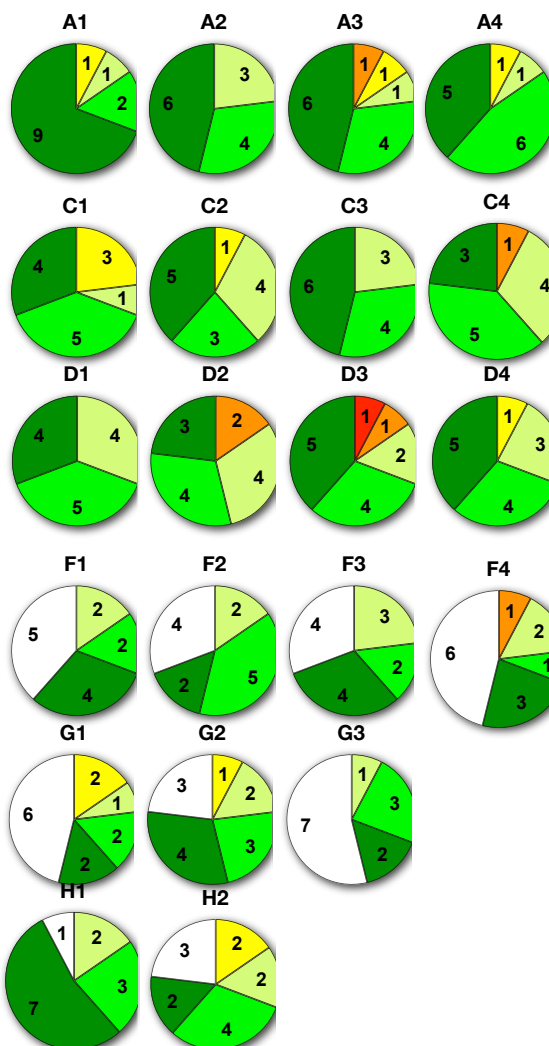
I: OVERALL



J: Infrastructures



K: Student Performance



Module:
Ac. Year

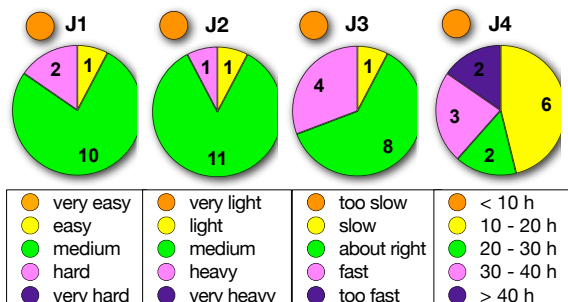
DA0104
2012/2013

no. of students in study plan:	15
no. of evaluated students:	14
no. of questionnaires delivered:	13

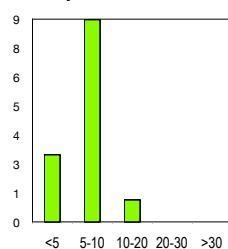
STUDENT COMMENTS

Appropriate those who concern with quality of results/Everyday homework (few exercises) can help the students to grasp the concepts better./ Recommended bibliography, and solutions for the exercises would have helped to study./The teacher is very kind and approachable. It is easy to ask him questions because he is knowledgeable but not intimidating./

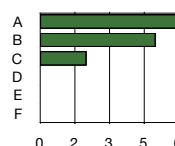
J: STUDENT AND MODULE CHARACTERISTICS



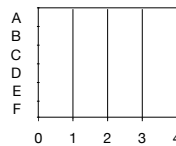
J8 - previous modules



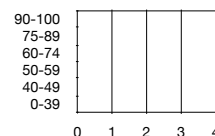
J7 - Expected Grades



Student Grades

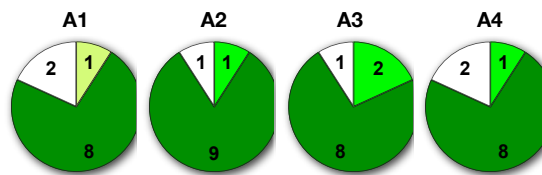


Student Grades

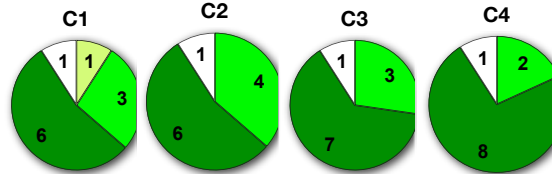


DA0201 - Introduction to Uncertainty Measurement.

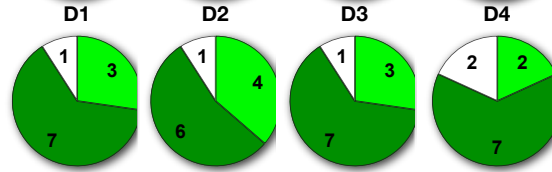
A: LEARNING



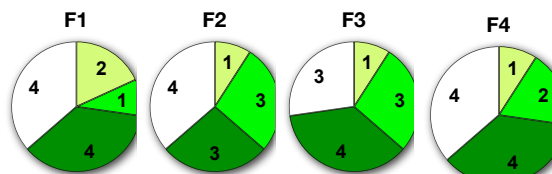
C: ORGANIZATION



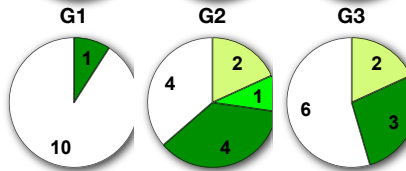
D: GROUP INTERACTION



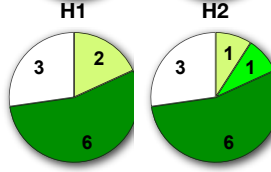
F: BREADTH



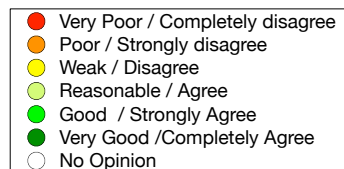
G: EXAMINATIONS



H: ASSIGNMENTS



I: OVERALL



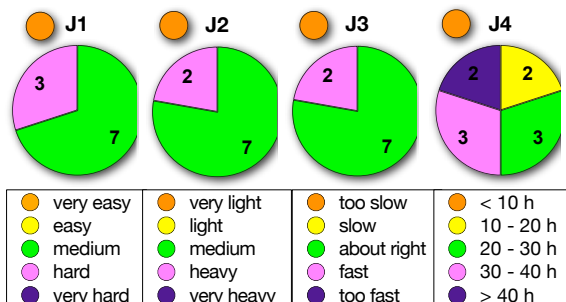
J: Infrastructures



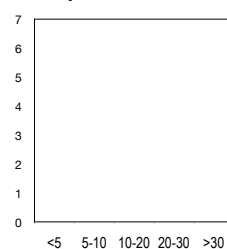
K: Student Performance



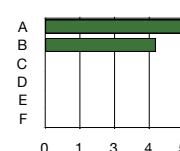
J: STUDENT AND MODULE CHARACTERISTICS



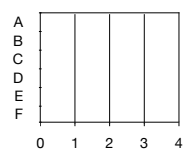
J8 - previous modules



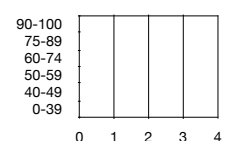
J7 - Expected Grades



Student Grades

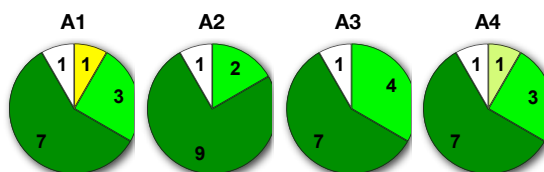


Student Grades

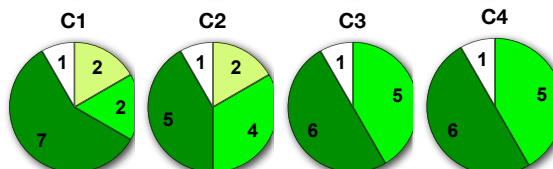


DA0203 - Uncertainty Measurement in Chemical and Microbiological Tests.

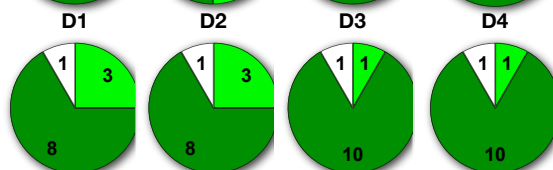
A: LEARNING



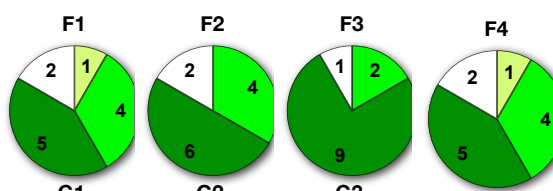
C: ORGANIZATION



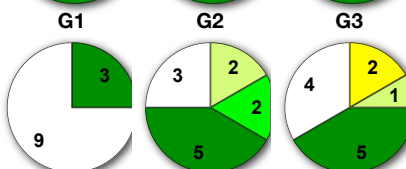
D: GROUP INTERACTION



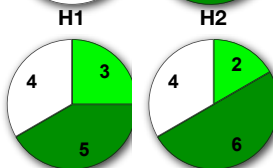
F: BREADTH



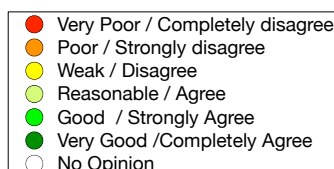
G: EXAMINATIONS



H: ASSIGNMENTS



I: OVERALL



J: Infrastructures



K: Student Performance



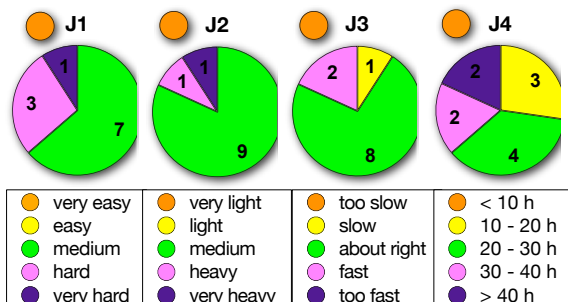
Module: **DA0203**
Ac. Year: 2012/2013

no. of students in study plan:	14
no. of evaluated students:	14
no. of questionnaires delivered:	12

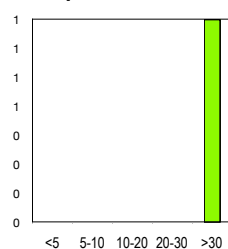
STUDENT COMMENTS

The professor gave something in the examination that he did not teach. We are really clueless on how to do it. We tried reading references like ISO and Eurachem Guide but still we did not find any clear discussion of that item he gave in the examination. Other than that, I appreciate this module./some questions in the examination, I think we didn't learn in the class/This module was slow and it covers the uncertainty in chemical laboratories only other than microbiological and medical laboratories, whereas uncertainty of these laboratories is direct application of some approaches explained in this module./

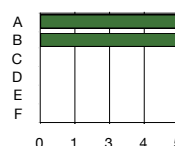
J: STUDENT AND MODULE CHARACTERISTICS



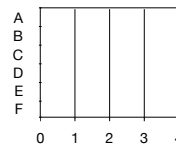
J8 - previous modules



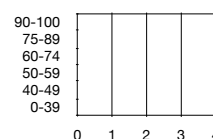
J7 - Expected Grades



Student Grades



Student Grades



DA0204 - Uncertainty Estimation in Clinical Analysis.

A: LEARNING



C: ORGANIZATION



D: GROUP INTERACTION



F: BREADTH



G: EXAMINATIONS



H: ASSIGNMENTS



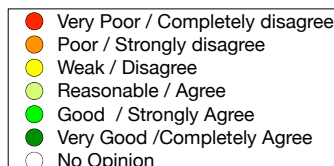
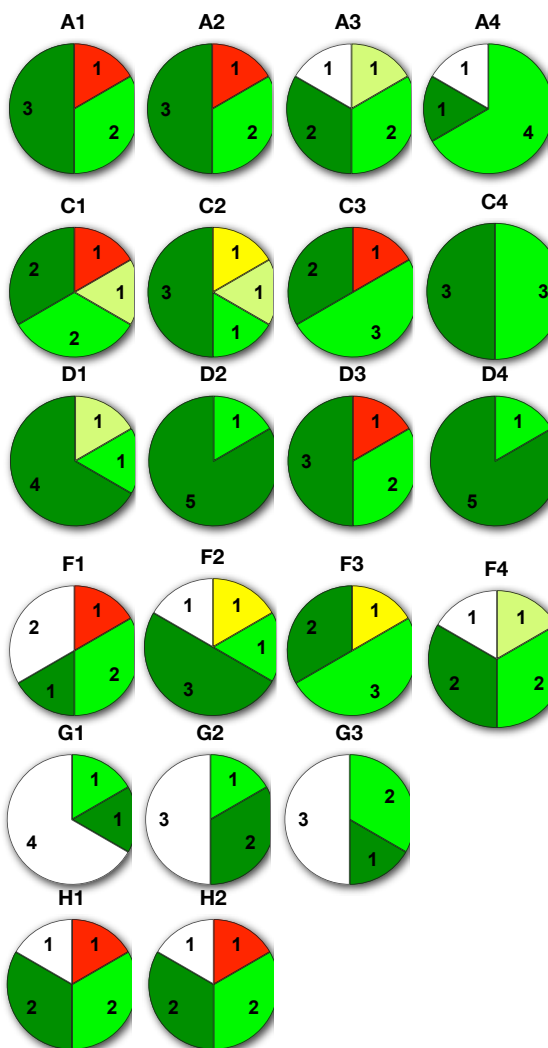
I: OVERALL



J: Infrastructures



K: Student Performance



Module:
Ac. Year

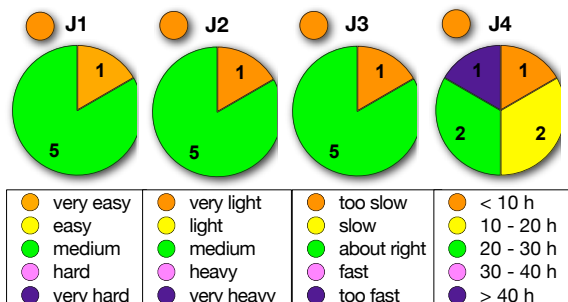
DA0204
2012/2013

no. of students in study plan:	4
no. of evaluated students:	6
no. of questionnaires delivered:	6

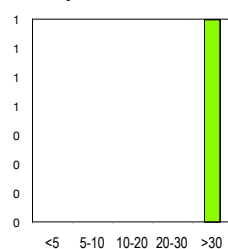
STUDENT COMMENTS

I suggest to merge this module in uncertainty in chemical laboratories/

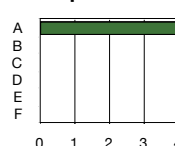
J: STUDENT AND MODULE CHARACTERISTICS



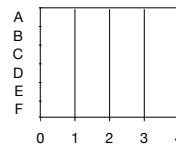
J8 - previous modules



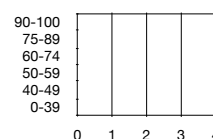
J7 - Expected Grades



Student Grades



Student Grades



DA0301 - Experimental Design and Optimization.

A: LEARNING



C: ORGANIZATION



D: GROUP INTERACTION



F: BREADTH



G: EXAMINATIONS



H: ASSIGNMENTS



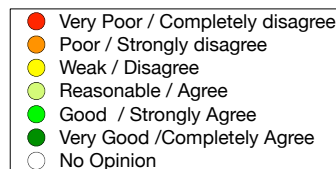
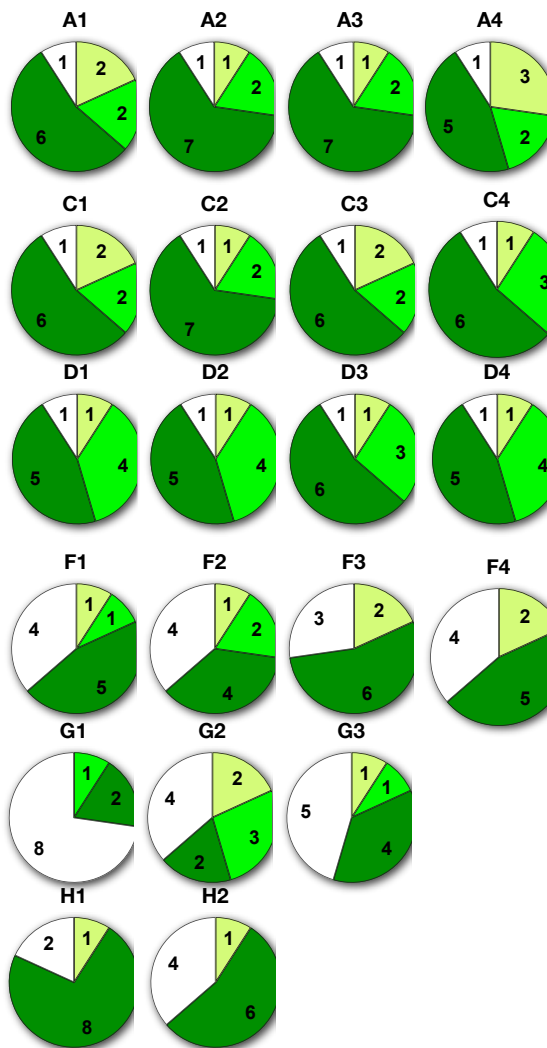
I: OVERALL



J: Infrastructures



K: Student Performance



Module:

DA0301

Ac. Year

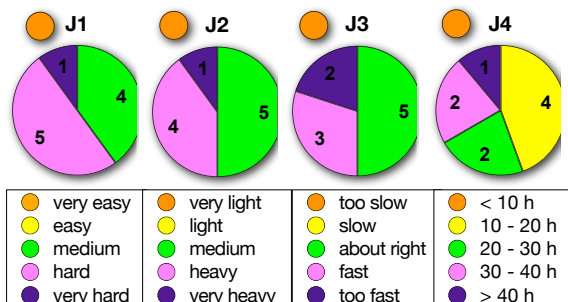
2012/2013

no. of students in study plan:	9
no. of evaluated students:	12
no. of questionnaires delivered:	11

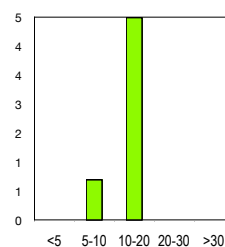
STUDENT COMMENTS

I have a comment, giving exercise in class or homework and doing solutions for those problems together in class to practice or understand for students to have a good knowledge on area of the module is a nice idea, thank you to Prof. Bjørn Grung/

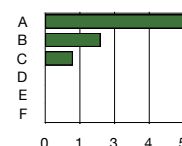
J: STUDENT AND MODULE CHARACTERISTICS



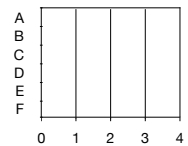
J8 - previous modules



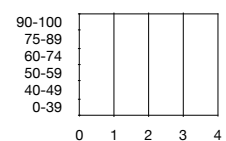
J7 - Expected Grades



Student Grades



Student Grades



DA0302 - Pattern Recognition and Classification.

A: LEARNING



C: ORGANIZATION



D: GROUP INTERACTION



F: BREADTH



G: EXAMINATIONS



H: ASSIGNMENTS



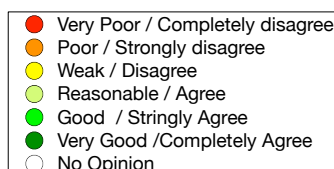
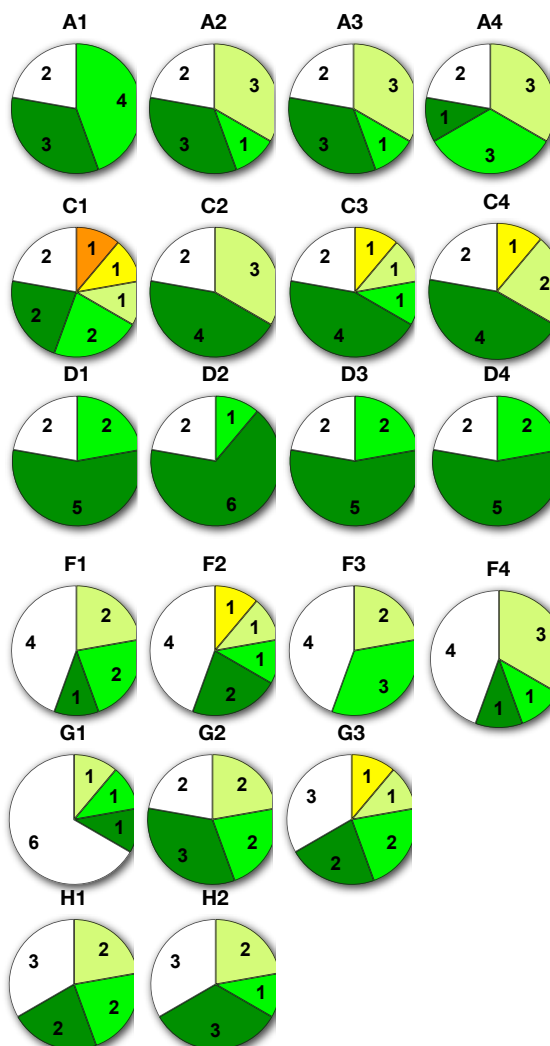
I: OVERALL



J: Infrastructures



K: Student Performance



Module:
Ac. Year

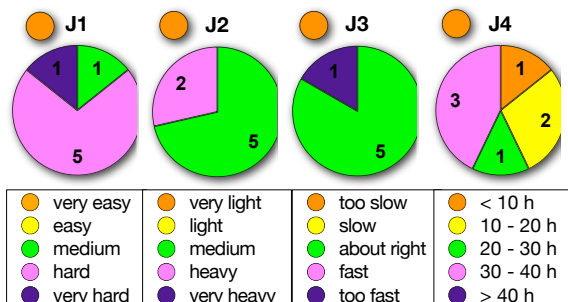
DA0302
2012/2013

no. of students in study plan:	4
no. of evaluated students:	9
no. of questionnaires delivered:	9

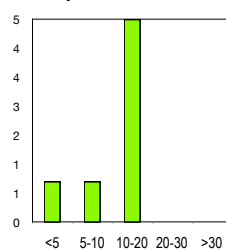
STUDENT COMMENTS

It is better if practical exercises are done./I really thank Prof Palacios for his patience and kindness to us. Many of the students have no background to Chemometrics so this module was entirely new for most of us. But he is very understanding and very considerate to his students answering their questions and clarifying their confusions. Thank you very much. In addition, his English is good, so even if the module itself was difficult (because it was new to us) at least his explanations are easy to understand because his English is not bad. Thank you very much Prof./

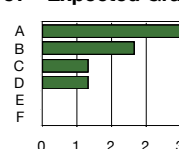
J: STUDENT AND MODULE CHARACTERISTICS



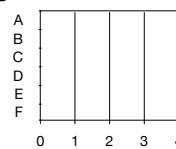
J8 - previous modules



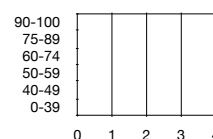
J7 - Expected Grades



Student Grades



Student Grades



DA0306 - Fundamental of Multivariate Data Analysis.

A: LEARNING



C: ORGANIZATION



D: GROUP INTERACTION



F: BREADTH



G: EXAMINATIONS



H: ASSIGNMENTS



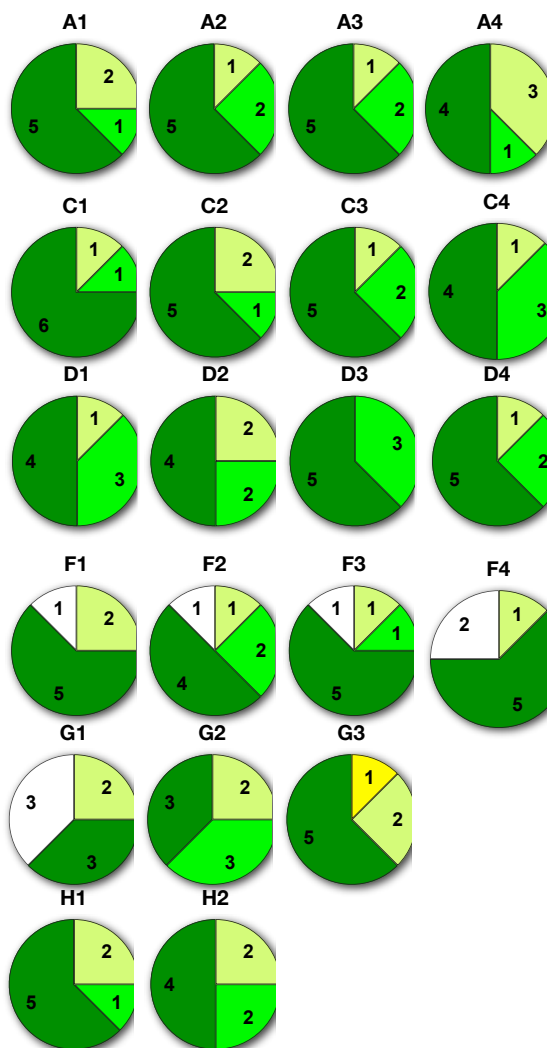
I: OVERALL



J: Infrastructures



K: Student Performance



Module:

DA0306

Ac. Year

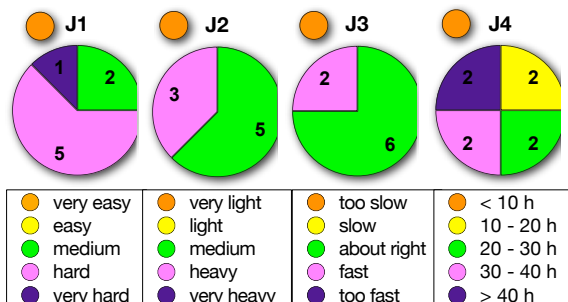
2012/2013

no. of students in study plan:	4
no. of evaluated students:	8
no. of questionnaires delivered:	8

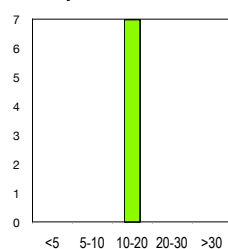
STUDENT COMMENTS

I have some commons which are not limited to this module. I sent my final assignment of DA0103 and QM0502, but I didn't get the reply from the professors. I know the professors are very busy and they receive many emails every day. However, if they don't reply the email, we don't know if they already received it or not. And we don't want to resend the email many times since we afraid the professors will get annoyed. So I hope the professors can receive the assignments./More detail elaboration with more hours discussion required to understand and apply the subject in practical field./

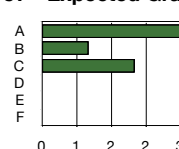
J: STUDENT AND MODULE CHARACTERISTICS



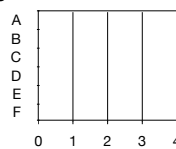
J8 - previous modules



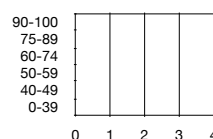
J7 - Expected Grades



Student Grades

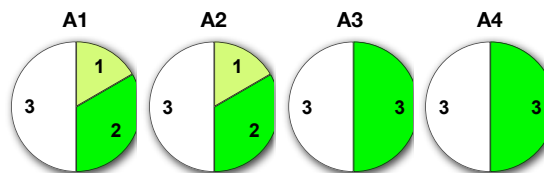


Student Grades

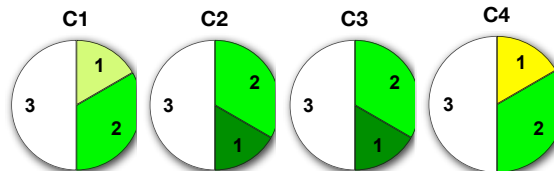


DA0311 - Multivariate Calibration.

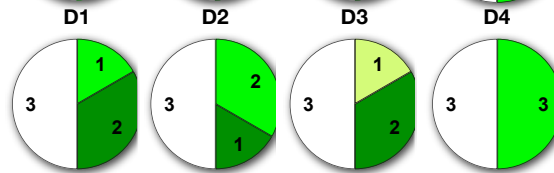
A: LEARNING



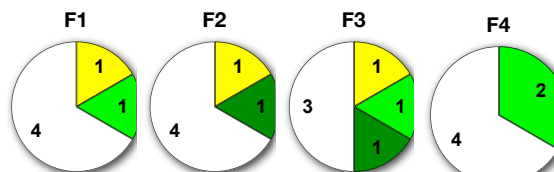
C: ORGANIZATION



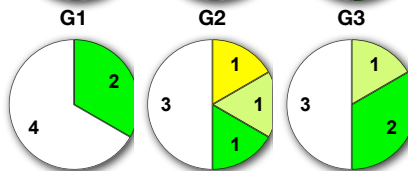
D: GROUP INTERACTION



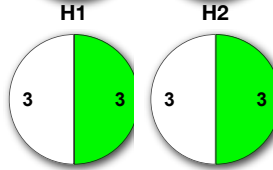
F: BREADTH



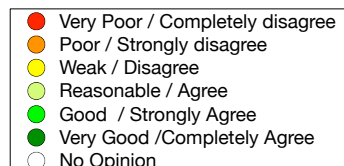
G: EXAMINATIONS



H: ASSIGNMENTS



I: OVERALL



J: Infrastructures



K: Student Performance



Module:
Ac. Year

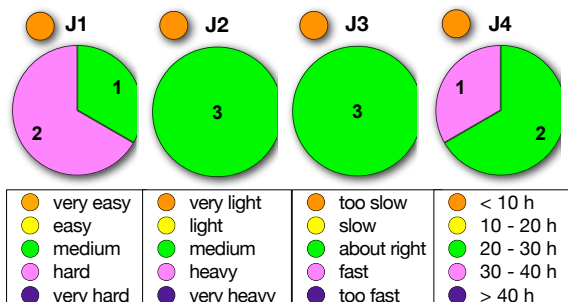
DA0311
2012/2013

no. of students in study plan:	1
no. of evaluated students:	6
no. of questionnaires delivered:	6

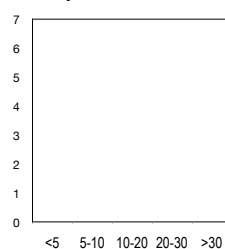
STUDENT COMMENTS

Incorporation of exercise as an assessment method is good. It is also better if exercise was done in class./

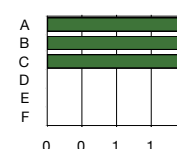
J: STUDENT AND MODULE CHARACTERISTICS



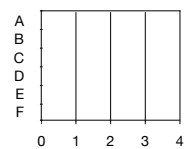
J8 - previous modules



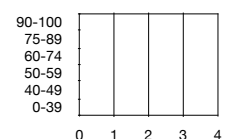
J7 - Expected Grades



Student Grades



Student Grades



QM0102 - Introduction to Quality Management.

A: LEARNING



C: ORGANIZATION



D: GROUP INTERACTION



F: BREADTH



G: EXAMINATIONS



H: ASSIGNMENTS



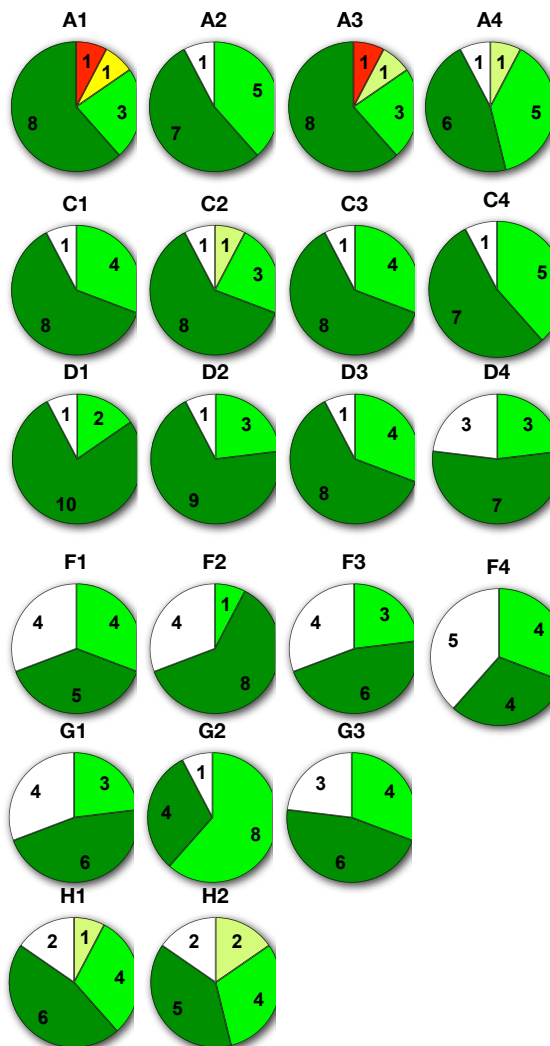
I: OVERALL



J: Infrastructures



K: Student Performance



Module:
Ac. Year

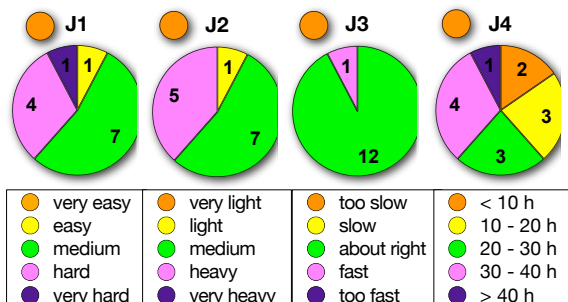
QM0102
2012/2013

no. of students in study plan:	14
no. of evaluated students:	13
no. of questionnaires delivered:	13

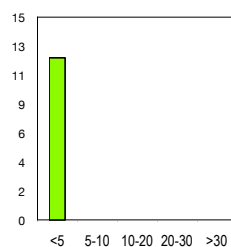
STUDENT COMMENTS

This module is the fundamental of quality system./This module stimulated us how to deal with quality management. The evaluation method is challenging which is a bit good./I have an appreciation about giving exercises and homework to make practice and to have good idea about the module content./In my opinion the subject had a good essential introductory content and was well positioned in the study plan chronology./It is very good idea to start with this module./She's always giving us tricky questions. It is challenging and frustrating at the same time./

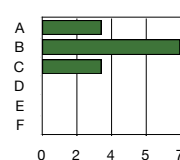
J: STUDENT AND MODULE CHARACTERISTICS



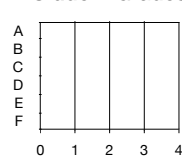
J8 - previous modules



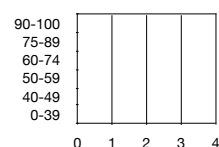
J7 - Expected Grades



Student Grades

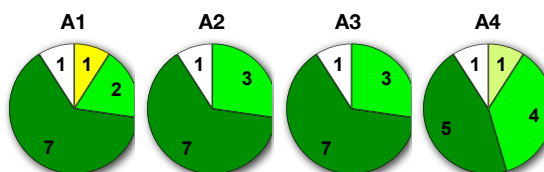


Student Grades

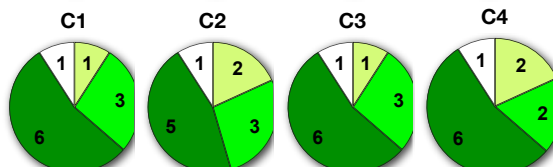


QM0104 - Laboratory Quality Systems: ISO/IEC 17025.

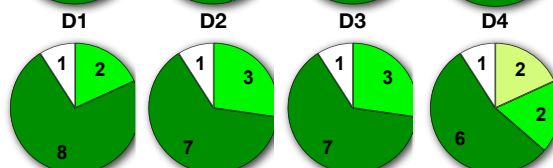
A: LEARNING



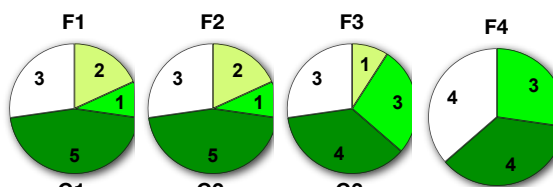
C: ORGANIZATION



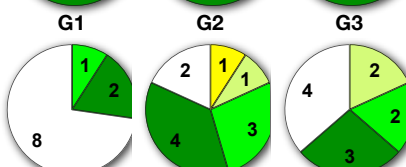
D: GROUP INTERACTION



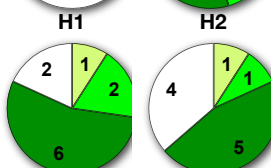
F: BREADTH



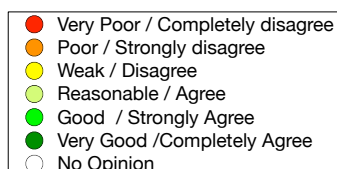
G: EXAMINATIONS



H: ASSIGNMENTS



I: OVERALL



J: Infrastructures



K: Student Performance



Module:
Ac. Year

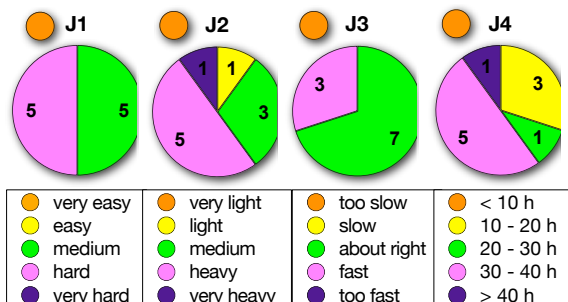
QM0104
2012/2013

no. of students in study plan:	11
no. of evaluated students:	11
no. of questionnaires delivered:	11

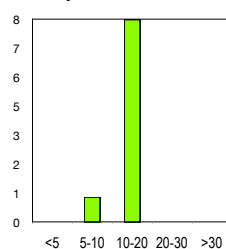
STUDENT COMMENTS

Fundamental module of Laboratory Mangement/

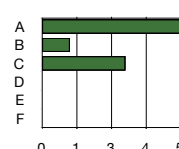
J: STUDENT AND MODULE CHARACTERISTICS



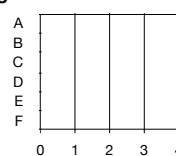
J8 - previous modules



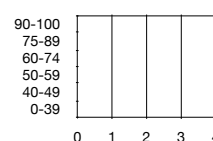
J7 - Expected Grades



Student Grades

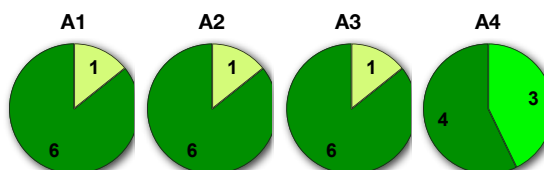


Student Grades

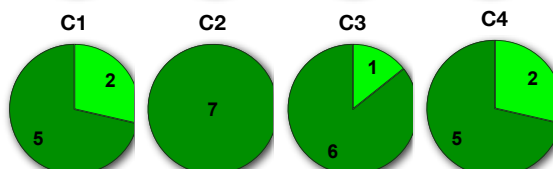


QM0105 - HACCP and ISO 22000.

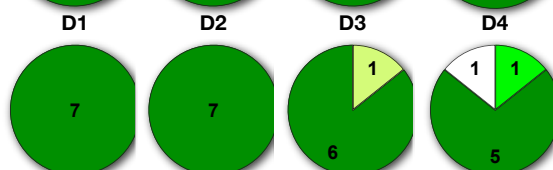
A: LEARNING



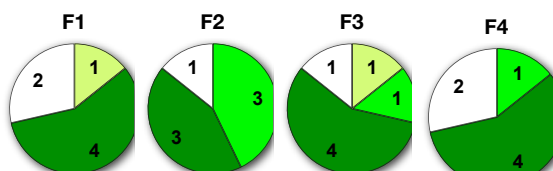
C: ORGANIZATION



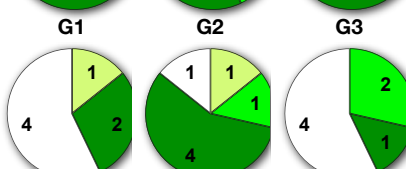
D: GROUP INTERACTION



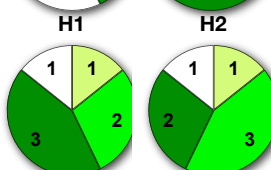
F: BREADTH



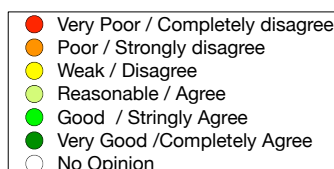
G: EXAMINATIONS



H: ASSIGNMENTS



I: OVERALL



J: Infrastructures



K: Student Performance



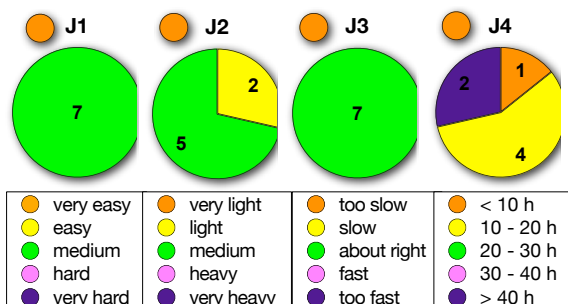
Module:
Ac. Year

QM0105
2012/2013

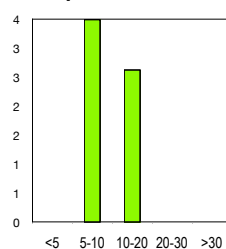
no. of students in study plan:	6
no. of evaluated students:	7
no. of questionnaires delivered:	7

STUDENT COMMENTS

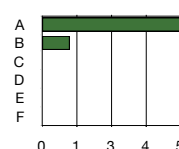
J: STUDENT AND MODULE CHARACTERISTICS



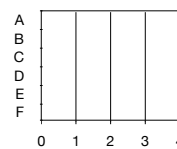
J8 - previous modules



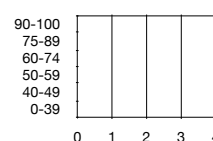
J7 - Expected Grades



Student Grades

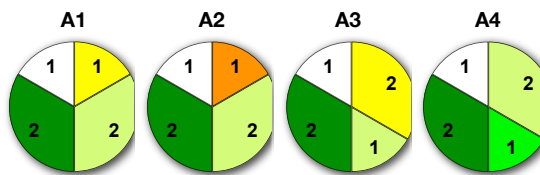


Student Grades

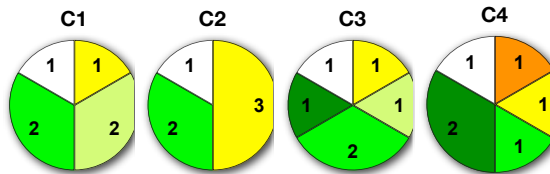


QM0107 - Laboratory Quality Systems: ISO 15189.

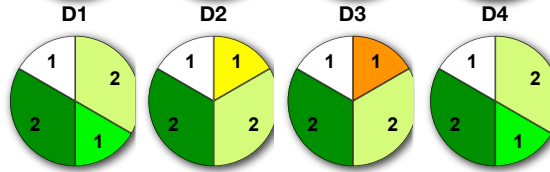
A: LEARNING



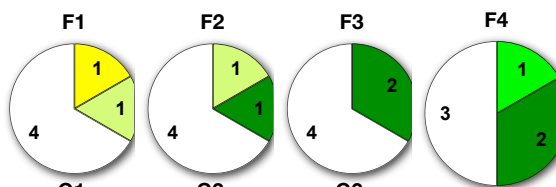
C: ORGANIZATION



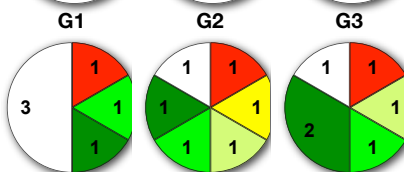
D: GROUP INTERACTION



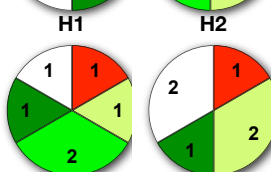
F: BREADTH



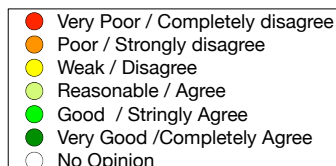
G: EXAMINATIONS



H: ASSIGNMENTS



I: OVERALL



J: Infrastructures



K: Student Performance



Module:

QM0107

Ac. Year

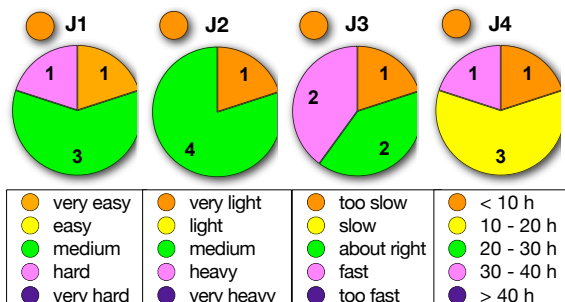
2012/2013

no. of students in study plan:	6
no. of evaluated students:	6
no. of questionnaires delivered:	6

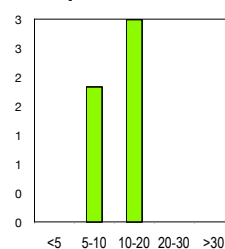
STUDENT COMMENTS

This module depends on other module (ISO 17025) but we did not have this module till now, so it is better to to study ISO 17025 firstly./One more point of evaluation would be good./

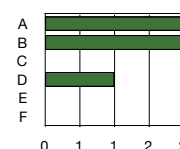
J: STUDENT AND MODULE CHARACTERISTICS



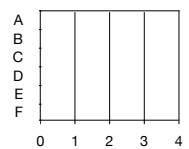
J8 - previous modules



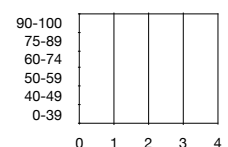
J7 - Expected Grades



Student Grades

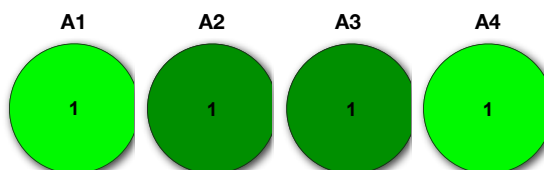


Student Grades

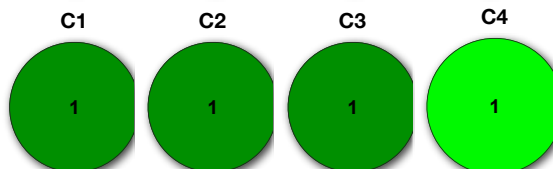


QM0202 - Human Resources.

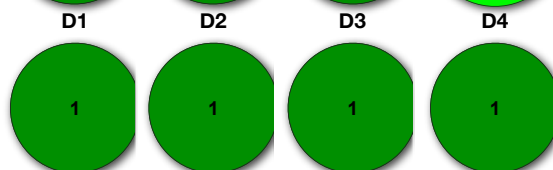
A: LEARNING



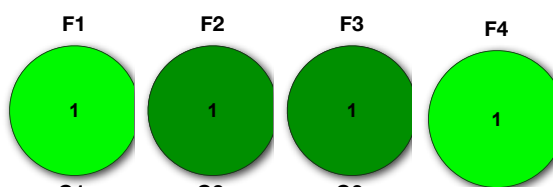
C: ORGANIZATION



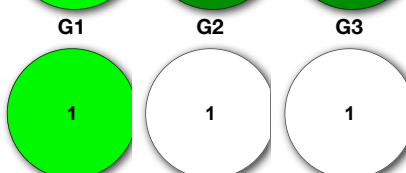
D: GROUP INTERACTION



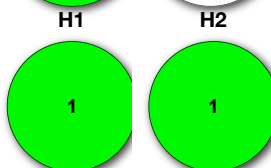
F: BREADTH



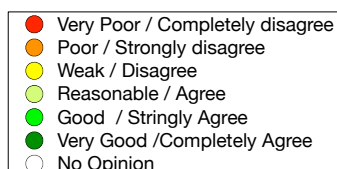
G: EXAMINATIONS



H: ASSIGNMENTS



I: OVERALL



J: Infrastructures



K: Student Performance



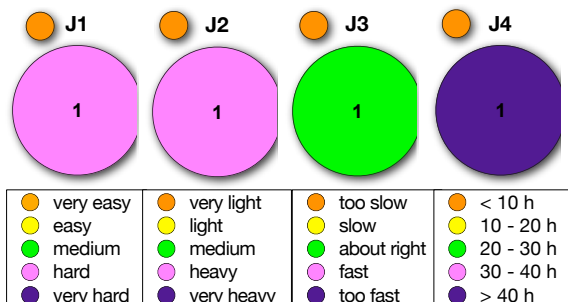
Module:
Ac. Year

QM0202
2012/2013

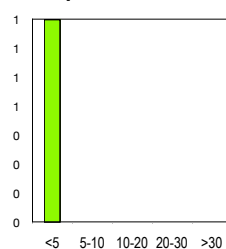
no. of students in study plan:	0
no. of evaluated students:	1
no. of questionnaires delivered:	1

STUDENT COMMENTS
No/

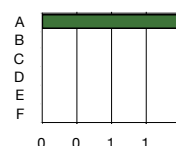
J: STUDENT AND MODULE CHARACTERISTICS



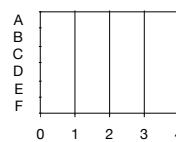
J8 - previous modules



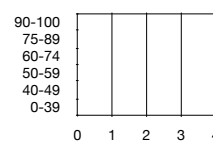
J7 - Expected Grades



Student Grades

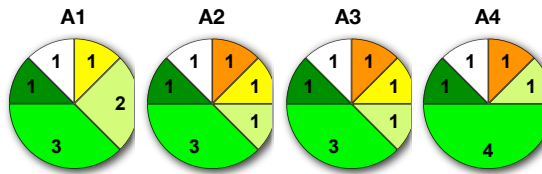


Student Grades

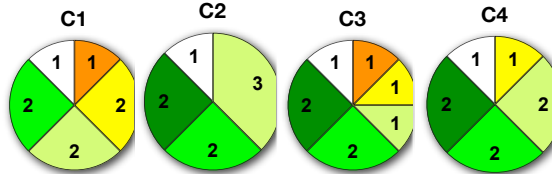


QM0204 - Quality Systems Documentation.

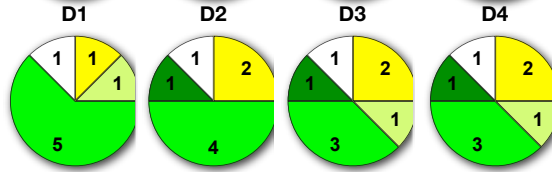
A: LEARNING



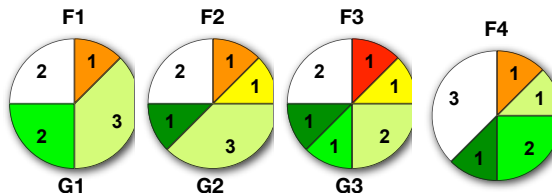
C: ORGANIZATION



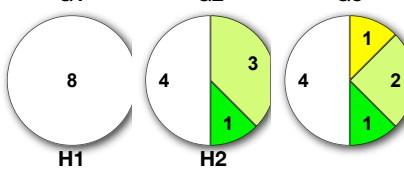
D: GROUP INTERACTION



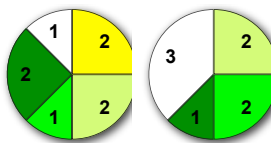
F: BREADTH



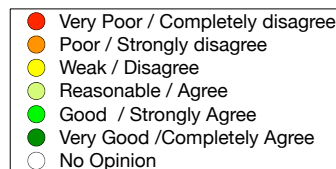
G: EXAMINATIONS



H: ASSIGNMENTS



I: OVERALL



J: Infrastructures



K: Student Performance



Module:

QM0204

Ac. Year

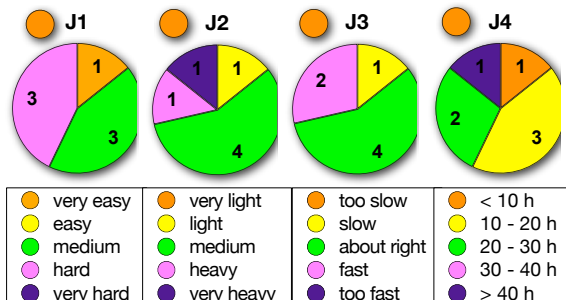
2012/2013

no. of students in study plan:	5
no. of evaluated students:	8
no. of questionnaires delivered:	8

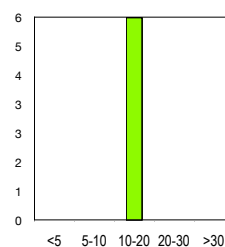
STUDENT COMMENTS

The professor just read the slides and was not able to effectively and efficiently impart the concepts for this module. Examples are in Catalan/Spanish which just created an annoying environment. The teacher also didn't address our questions. Instructions for some activities are not clear resulting to our output entirely different from what she is expecting. This supposedly good module turned out to be a waste of time. She should have learned how to impart her expertise to the students. In this light, I guess my expected grade is E or F because I really did not understand any concept in this module making it hard to do the assessment./The lecturer just read the slides. The explanation is not clear/The relevant example were almost Spanish.It was better to understand if they were in English/

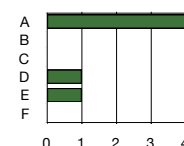
J: STUDENT AND MODULE CHARACTERISTICS



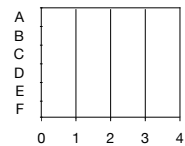
J8 - previous modules



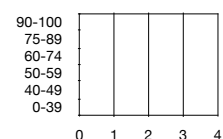
J7 - Expected Grades



Student Grades

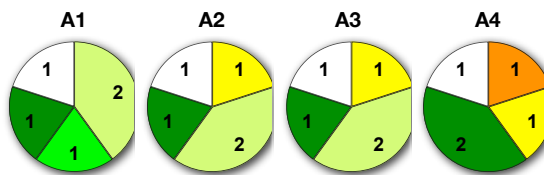


Student Grades

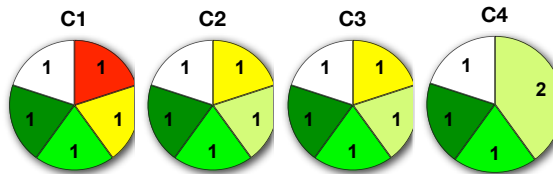


QM0302 - Calibration and Verification.

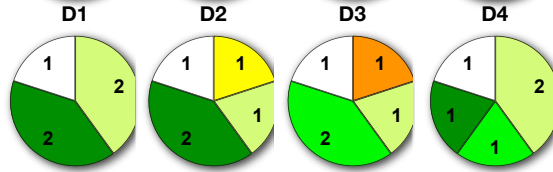
A: LEARNING



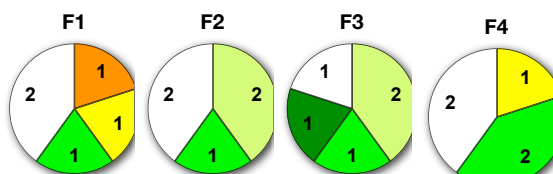
C: ORGANIZATION



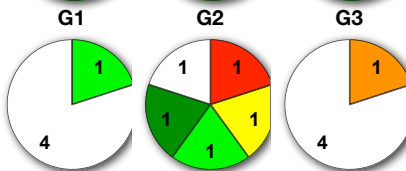
D: GROUP INTERACTION



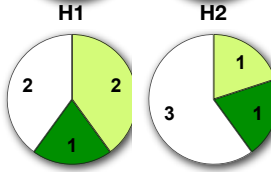
F: BREADTH



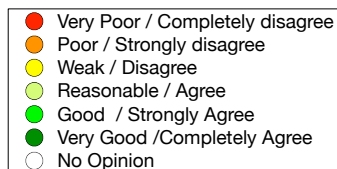
G: EXAMINATIONS



H: ASSIGNMENTS



I: OVERALL



J: Infrastructures



K: Student Performance



Module:

QM0302

Ac. Year

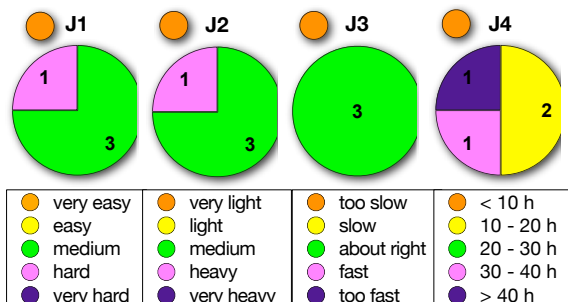
2012/2013

no. of students in study plan:	5
no. of evaluated students:	5
no. of questionnaires delivered:	5

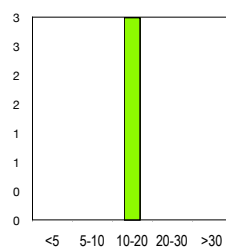
STUDENT COMMENTS

The explanations of the professor were not clear. Questions are not answered clearly. Assessment method seems to be different from what is discussed in the class. The flow of the discussion in the class did not focus or was not geared towards making the assessment or probably it was but the discussions were not clear./

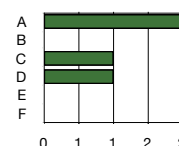
J: STUDENT AND MODULE CHARACTERISTICS



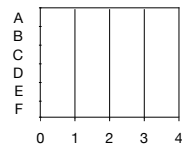
J8 - previous modules



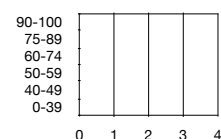
J7 - Expected Grades



Student Grades

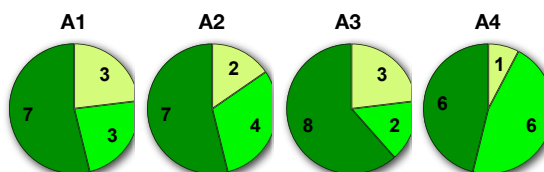


Student Grades

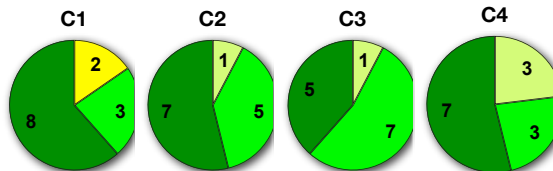


QM0306 - Proficiency Testing Schemes and Certified Reference Materials.

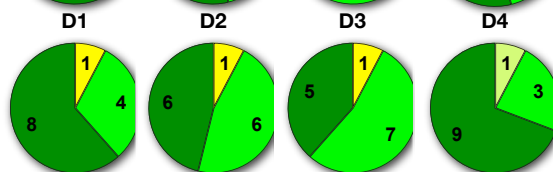
A: LEARNING



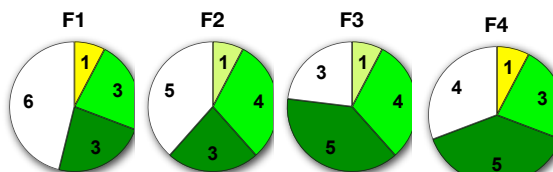
C: ORGANIZATION



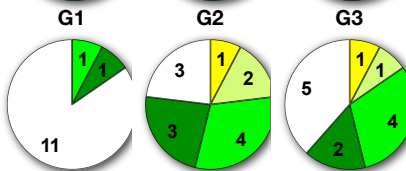
D: GROUP INTERACTION



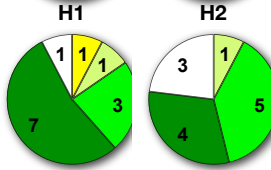
F: BREADTH



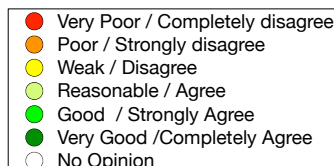
G: EXAMINATIONS



H: ASSIGNMENTS



I: OVERALL



J: Infrastructures



K: Student Performance



Module:

QM0306

Ac. Year

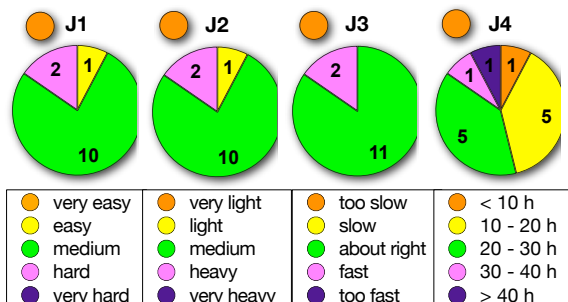
2012/2013

no. of students in study plan:	15
no. of evaluated students:	15
no. of questionnaires delivered:	14

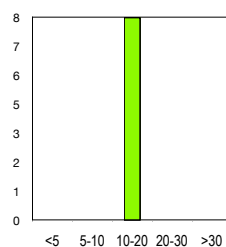
STUDENT COMMENTS

The slides uploaded in the portal is incomplete. The professor want to force us to concentrate in class in this way. I can understand. But I hope the professor can upload the complete the version after class./

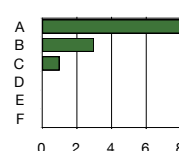
J: STUDENT AND MODULE CHARACTERISTICS



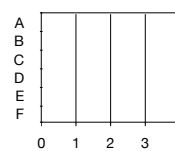
J8 - previous modules



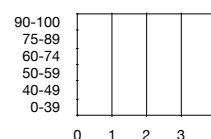
J7 - Expected Grades



Student Grades



Student Grades



QM0502 - Method Validation.

A: LEARNING



C: ORGANIZATION



D: GROUP INTERACTION



F: BREADTH



G: EXAMINATIONS



H: ASSIGNMENTS



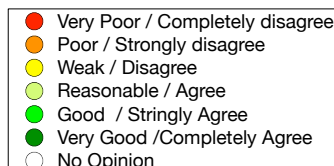
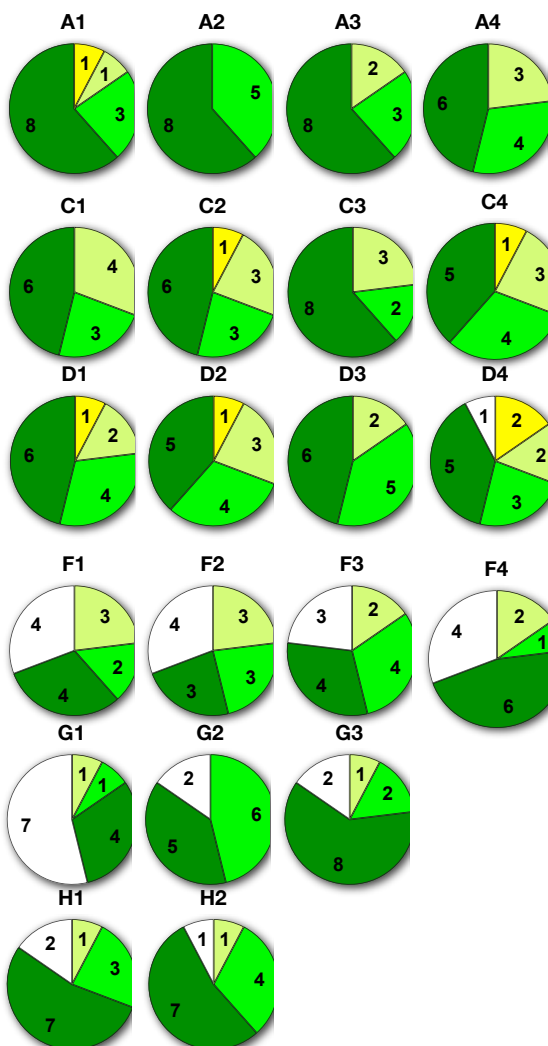
I: OVERALL



J: Infrastructures



K: Student Performance



Module:
Ac. Year

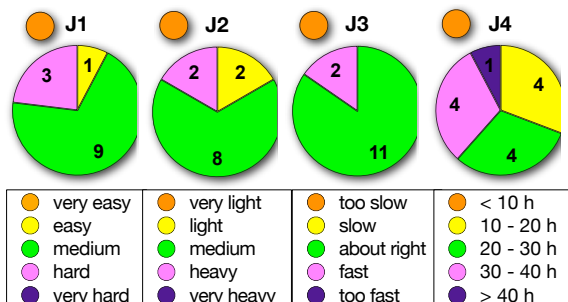
QM0502
2012/2013

no. of students in study plan:	15
no. of evaluated students:	14
no. of questionnaires delivered:	13

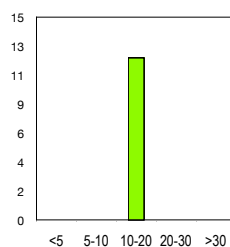
STUDENT COMMENTS

Practice of calculation will improve the module/As this module form the basis of analytical Laboratory,more practical elaboration with calculations and discussion along with theoretical will be more fruitful for learners./Almost everything was discussed and present in the slides given to us. But it would have been a whole lot better if the examples were solved by everybody in the class or given as assignments then the solutions were discussed thoroughly in the class. But it's fine, since the teacher is very accommodating when consulted in email./

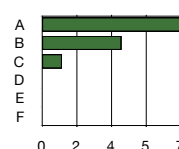
J: STUDENT AND MODULE CHARACTERISTICS



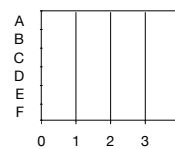
J8 - previous modules



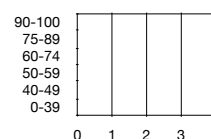
J7 - Expected Grades



Student Grades

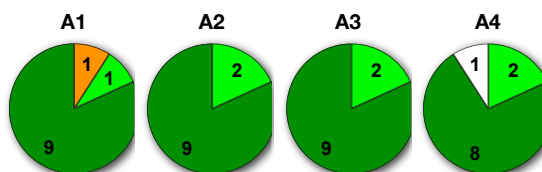


Student Grades

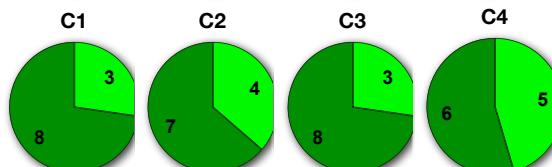


QM0503 - Technical Writing.

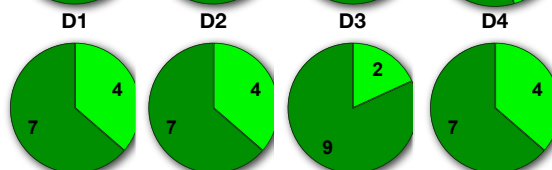
A: LEARNING



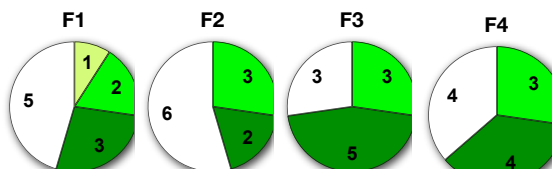
C: ORGANIZATION



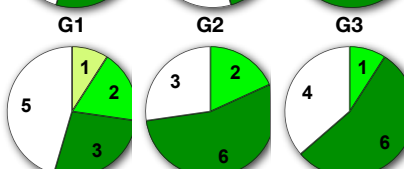
D: GROUP INTERACTION



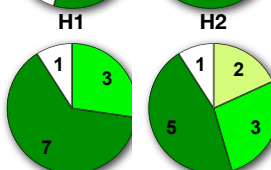
F: BREADTH



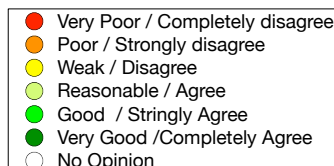
G: EXAMINATIONS



H: ASSIGNMENTS



I: OVERALL



J: Infrastructures



K: Student Performance



Module:
Ac. Year

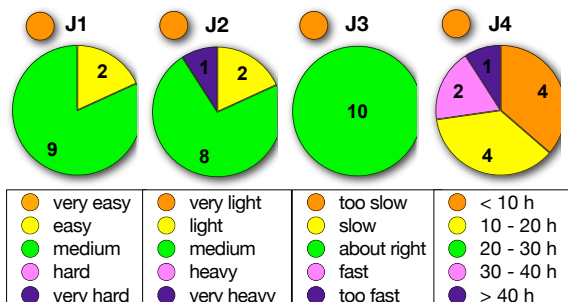
QM0503
2012/2013

no. of students in study plan:	10
no. of evaluated students:	12
no. of questionnaires delivered:	11

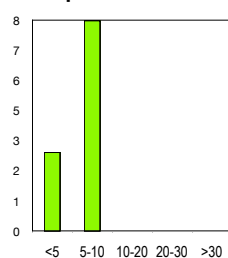
STUDENT COMMENTS

A small break would be good. Though the team work tasks helped to keep the attention up./It is very useful for the other modules/Interesting group work realized in classes/

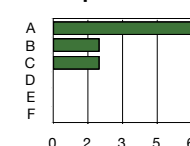
J: STUDENT AND MODULE CHARACTERISTICS



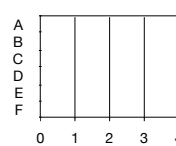
J8 - previous modules



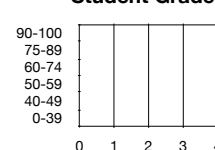
J7 - Expected Grades



Student Grades



Student Grades



QM0701 - Chemical Safety and REACH Regulations.

A: LEARNING



C: ORGANIZATION



D: GROUP INTERACTION



F: BREADTH



G: EXAMINATIONS



H: ASSIGNMENTS



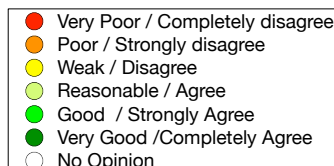
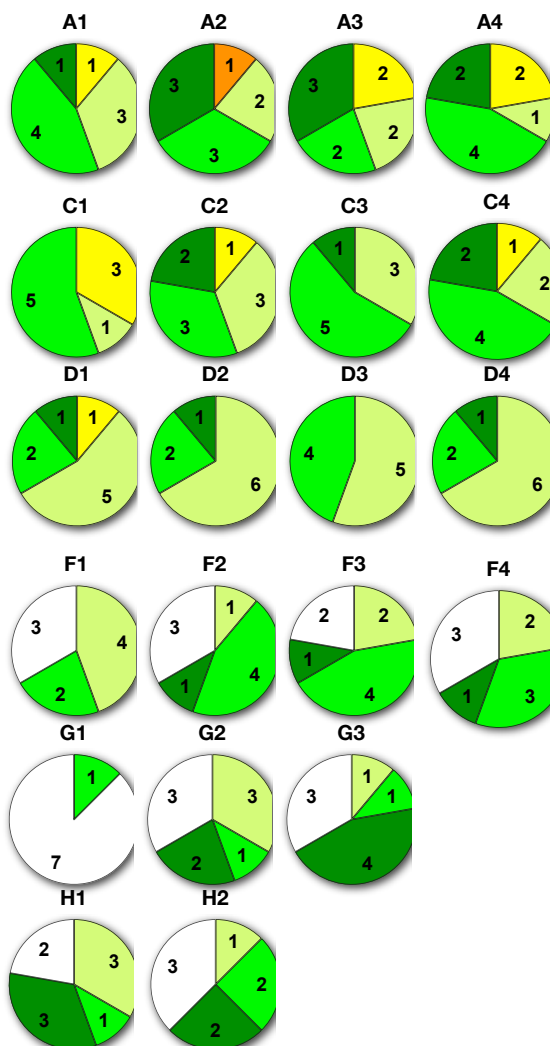
I: OVERALL



J: Infrastructures



K: Student Performance



Module:

QM0701

Ac. Year

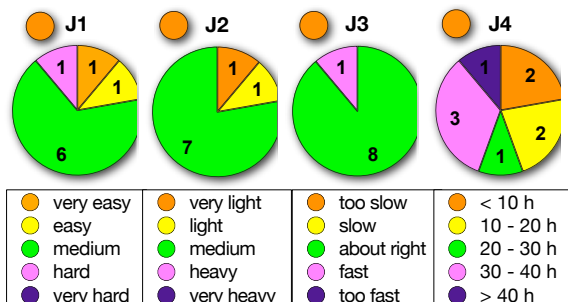
2012/2013

no. of students in study plan:	6
no. of evaluated students:	9
no. of questionnaires delivered:	9

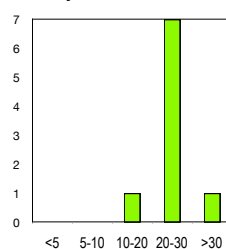
STUDENT COMMENTS

1. The professor should learn how to talk to the students because most of the time he is just looking at the slides and reading it. He has no eye contact with the students. He should not just read the slides because this created an environment where students no longer pay attention. 2. The case studies should have been better if done in class and relate with the lectures rather than at home. 3. The professor should learn how to engage more the students in the discussion and activities. 4. Slides should not look like a book that the professor will just read. 5. I want to commend the knowledge that the professor has. Maybe he should just improve the way of sharing it. / Even though the professor was lovely I think the language barrier was quite big, the students are not able to do the masters without a certain level of english and therefore I think the professors should be asked for a higher level of the language due to the fact that they are teaching. / A lot of information until we could not understand well. /

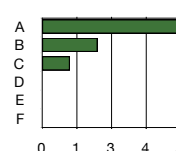
J: STUDENT AND MODULE CHARACTERISTICS



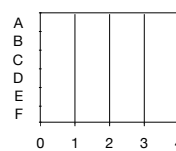
J8 - previous modules



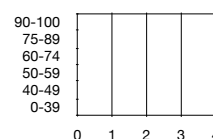
J7 - Expected Grades



Student Grades

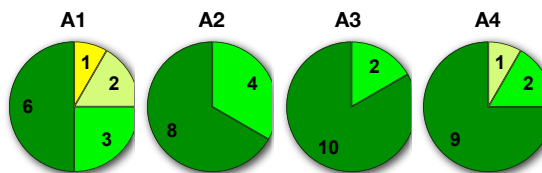


Student Grades

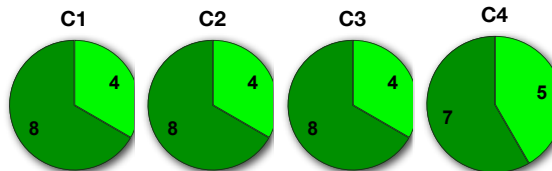


QM0802 - IT Tools.

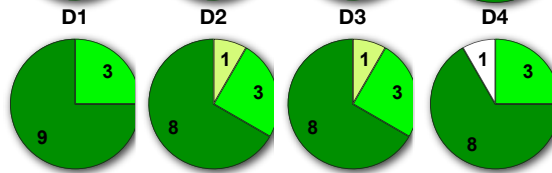
A: LEARNING



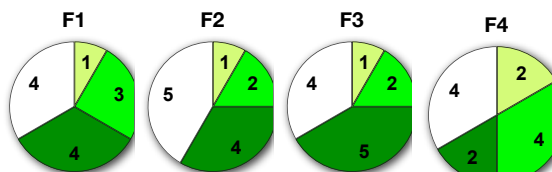
C: ORGANIZATION



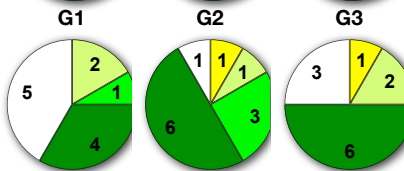
D: GROUP INTERACTION



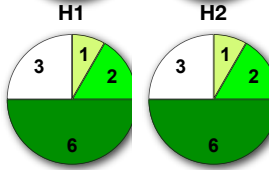
F: BREADTH



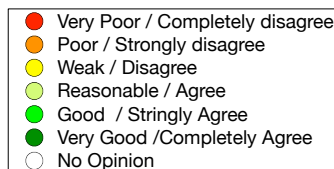
G: EXAMINATIONS



H: ASSIGNMENTS



I: OVERALL



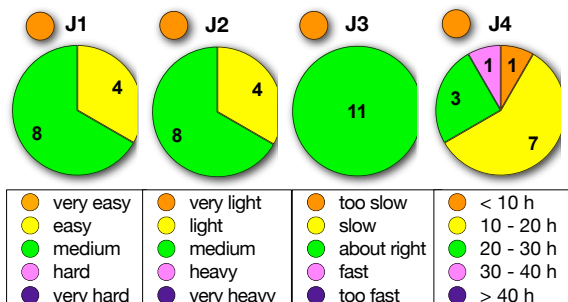
J: Infrastructures



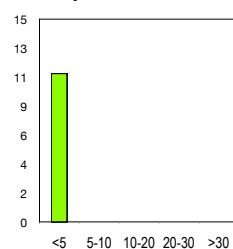
K: Student Performance



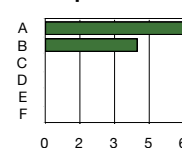
J: STUDENT AND MODULE CHARACTERISTICS



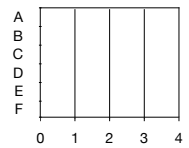
J8 - previous modules



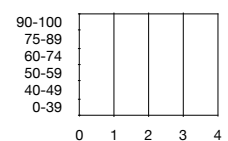
J7 - Expected Grades



Student Grades

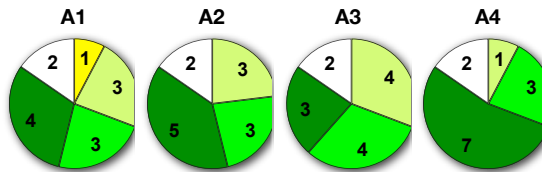


Student Grades

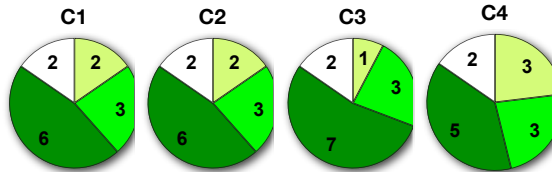


QM0803 - Laboratory Skills.

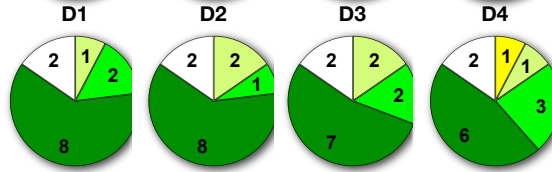
A: LEARNING



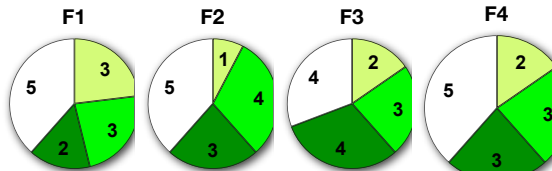
C: ORGANIZATION



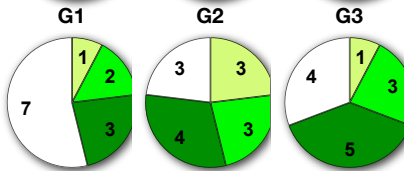
D: GROUP INTERACTION



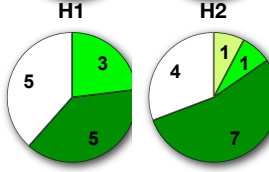
F: BREADTH



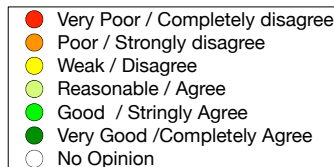
G: EXAMINATIONS



H: ASSIGNMENTS



I: OVERALL



J: Infrastructures



K: Student Performance



Module:
Ac. Year

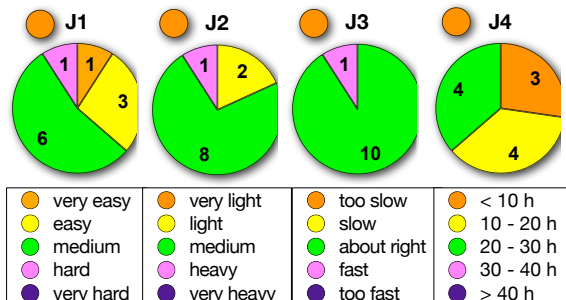
QM0803
2012/2013

no. of students in study plan:	8
no. of evaluated students:	15
no. of questionnaires delivered:	13

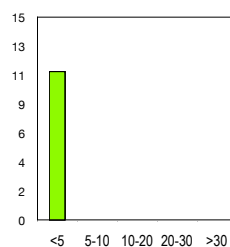
STUDENT COMMENTS

This module was well prepared by the professors. However, I must say, that I learned nothing NEW from this module. But that is because my background involves a lot of laboratory works and this module is just pretty basic. I understand that this module was just included to assess our lab experiences and knowledge and to level the playing field. It was good that there were 2-3 professors with us in the lab, so there were enough to assess and assist us. The professors are very helpful and approachable./Valuable module to understand the different backgrounds of students/

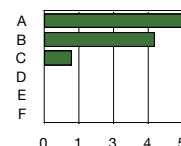
J: STUDENT AND MODULE CHARACTERISTICS



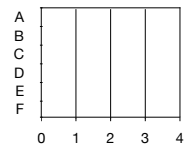
J8 - previous modules



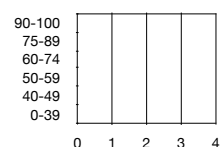
J7 - Expected Grades



Student Grades

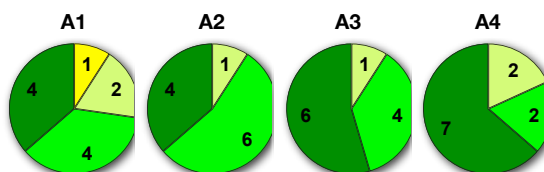


Student Grades

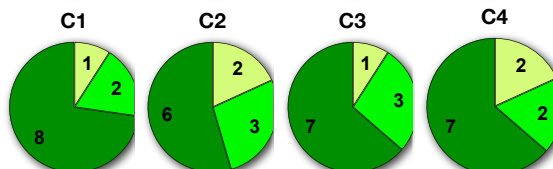


QM0808 - Communication Skills.

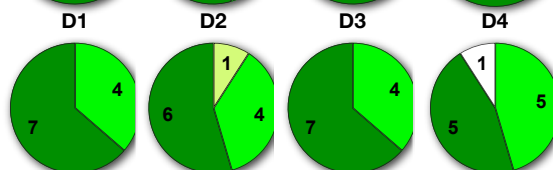
A: LEARNING



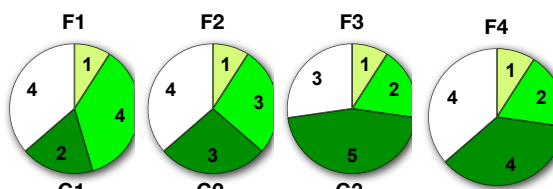
C: ORGANIZATION



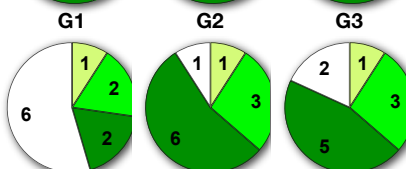
D: GROUP INTERACTION



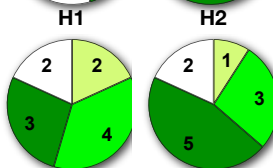
F: BREADTH



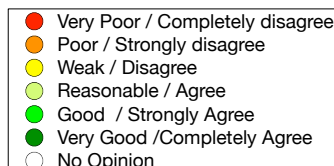
G: EXAMINATIONS



H: ASSIGNMENTS



I: OVERALL



J: Infrastructures



K: Student Performance



Module:

QM0808

Ac. Year

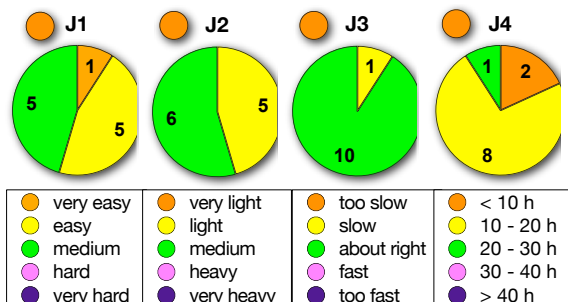
2012/2013

no. of students in study plan:	4
no. of evaluated students:	12
no. of questionnaires received:	11

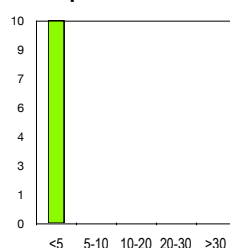
STUDENT COMMENTS

It is better if the professor gave us more constructive criticisms./I really appreciated the 1-min impromptu speech in the class. It is an effective way to warm-up and lose a bit of our shyness. The oral presentation is also very appropriate(of course) evaluation for this module to put into practice what we had learned. However, it would have been better if he also taught us the dress code during presentations. Also, I hope we could have a copy of the video of our presentation. Over-all, the teacher is nice, easy to understand and not boring. Those short breaks are really very effective./A valuable introductory module that facilitates the future work in other modules./

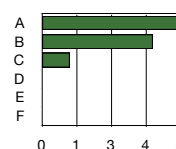
J: STUDENT AND MODULE CHARACTERISTICS



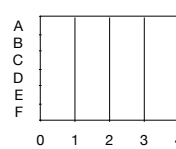
J8 - previous modules



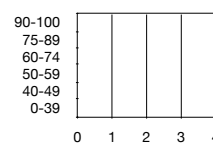
J7 - Expected Grades



Student Grades



Student Grades



QM0811 - Intensive Spanish Language course.

A: LEARNING



C: ORGANIZATION



D: GROUP INTERACTION



F: BREADTH



G: EXAMINATIONS



H: ASSIGNMENTS



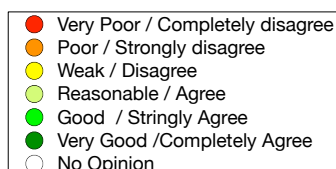
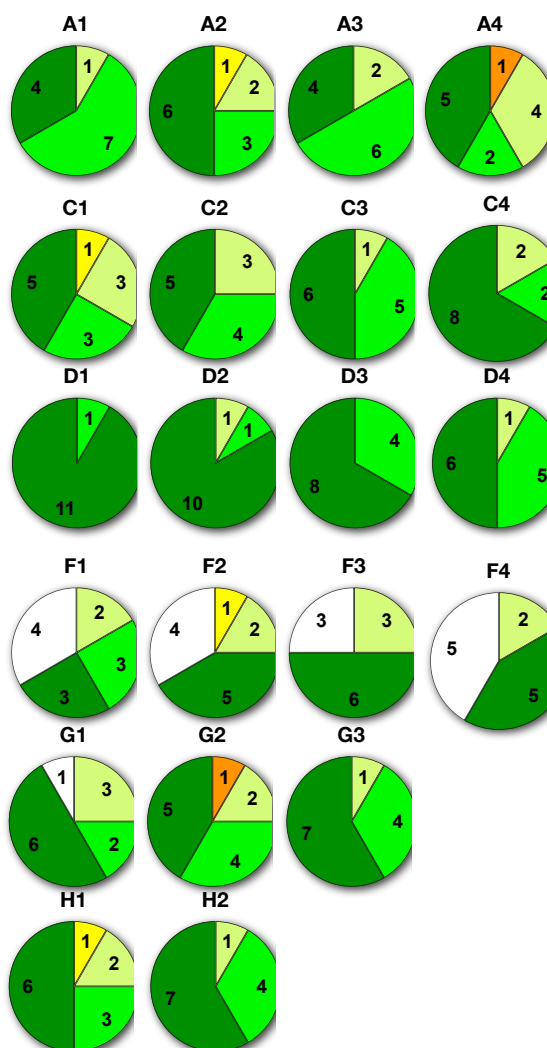
I: OVERALL



J: Infrastructures



K: Student Performance



Module:
Ac. Year

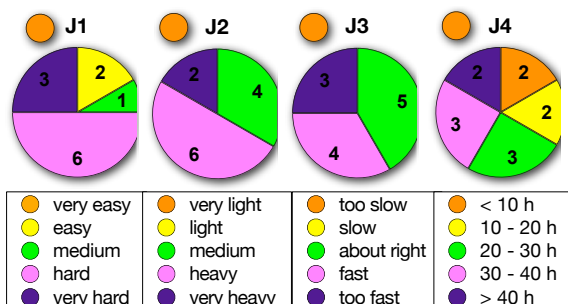
QM0811
2012/2013

no. of students in study plan:	0
no. of evaluated students:	13
no. of questionnaires delivered:	12

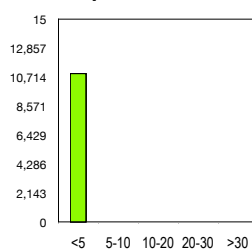
STUDENT COMMENTS

taking one hours per day for long time is better for foreigners to learn the language./It will be better if basic construction is taught. And it is better if most of the explanations are in English. The teacher keeps on speaking Spanish, which we don't understand so it is harder for us to follow./I don't have any problems with the teacher except that sometimes she explains in spanish which is of course difficult to understand because it is Spanish that we are trying to learn. But other than that she is excellent.I would like to suggest too that for us to really learn the language , then it should be a continuous learning process. They should not cram it to 3 weeks. Perhaps there should be a meeting once a week, just so we won't forget what we learned.Although that 3 weeks are enough to learn the survival spanish language, it would be more appreciated if it were given more time. We weren't taught the other verb forms and grammar so much. And I don't blame the teacher, because it really takes time to learn a language./In my opinion the module is useful and should continue to be lectured in single-module weeks. Maybe it should be better to insist in vocabulary acquisition, even being hard to learn so much in a short time./The grade I put "B" is with what I score in the class and comparing with other my classmates , moreover doing the assignments. However I don't speak Spanish language. Still I am learning./It was so intensive module and I could not memorize a lot of words in short time,so I suggest that the module should be limited to learn how to pronounce, to read and to say the basic expressions ONLY./There is a exam on every Friday. I feel stressed./

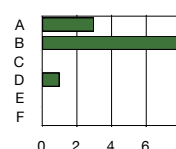
J: STUDENT AND MODULE CHARACTERISTICS



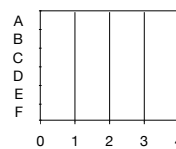
J8 - previous modules



J7 - Expected Grades



Student Grades



Student Grades

